

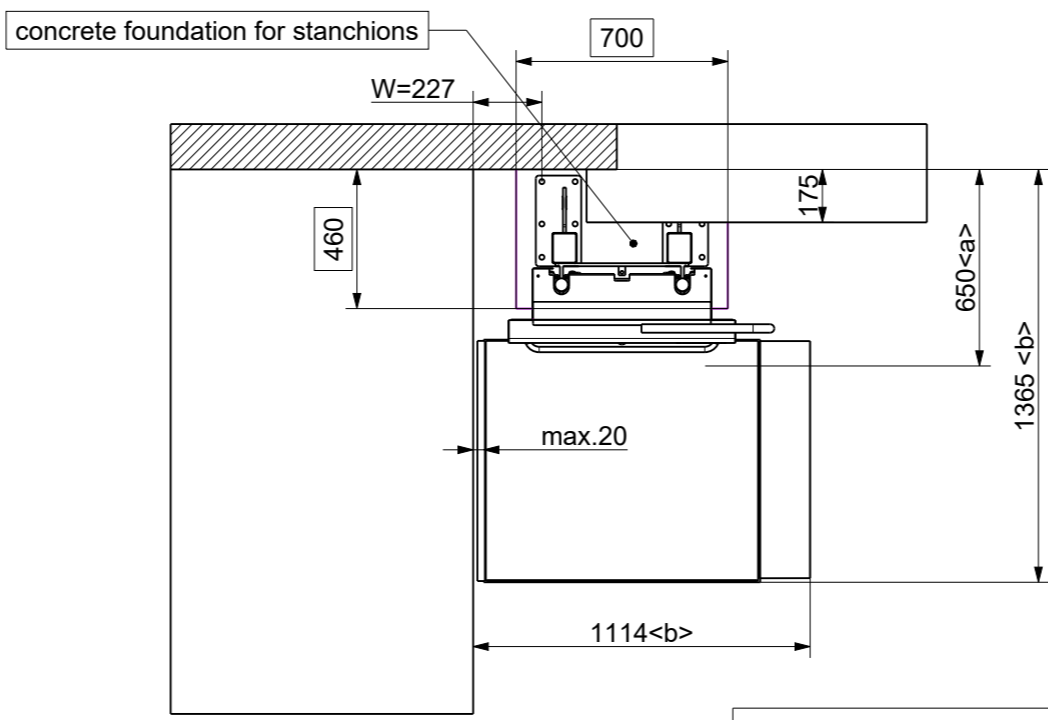
Platformlift PLV9
 Travel Height: 410 mm
 Platform Size: 900 x 800 mm
 Loading Capacity: 225kg
 Colour: Powder coated in standard RAL 9006
 Mounting: Stanchions
 Right hand device (as viewed from lower level)
 Inside installation
 2x wireless handheld remotes

Production approval:
 I hereby order the lift system as shown on the drawing and confirm that the layout of the railway is correct. All natural measurements are based on facts given from you. Ascendor is not responsible for charges which are a result from wrong stated measurements. By confirming the installation drawing, I also accept the GTCs and the final associated offer.

date, sign

concrete foundation:
 - quality: C20/25
 - size: 700x460mm
 - depth: frost-proofed
 - flat surface

Stanchions 100x80mm
 galvanized and powder coated RAL 9006
 Length = 2200mm (2 pcs.)



<a> ... required space platform closed
 ... required space platform open

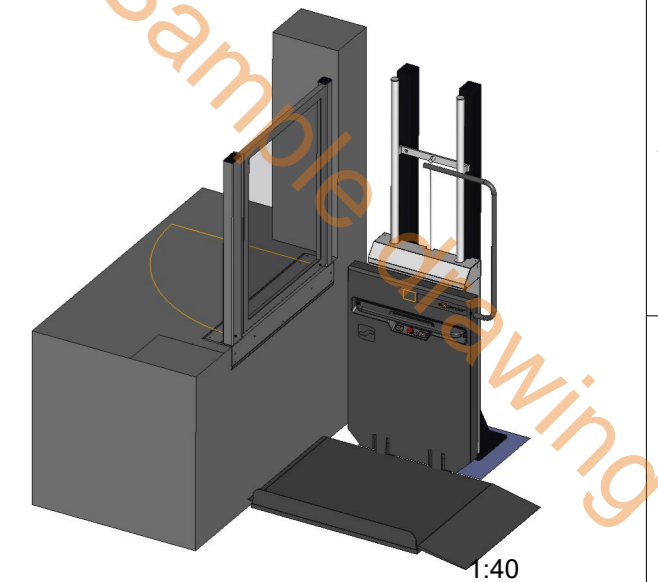
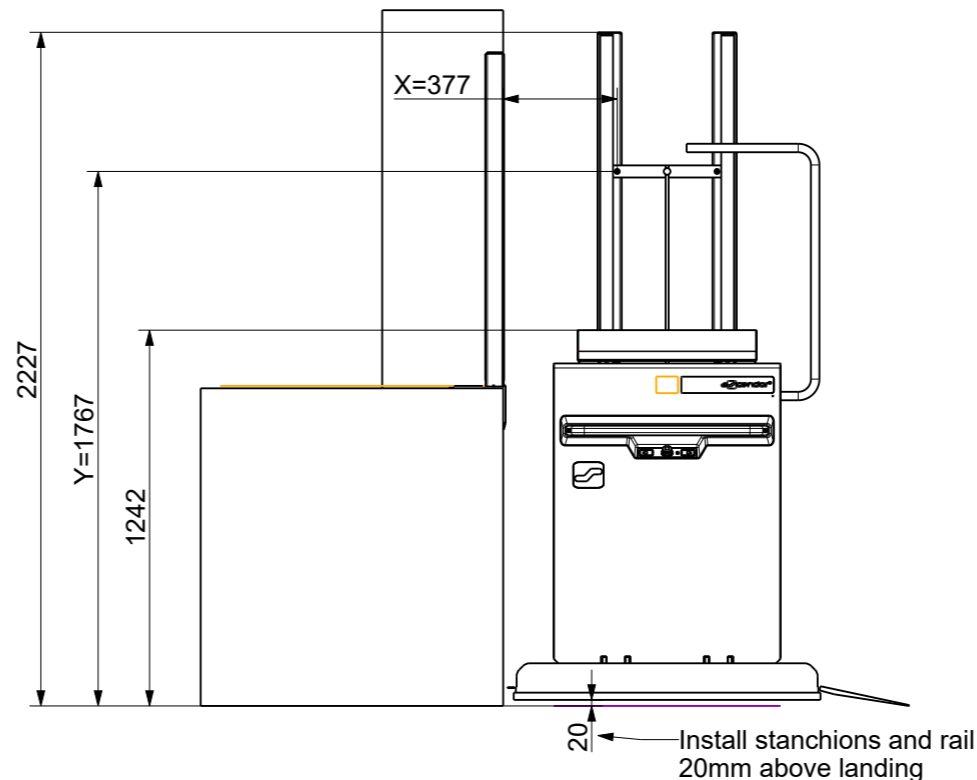
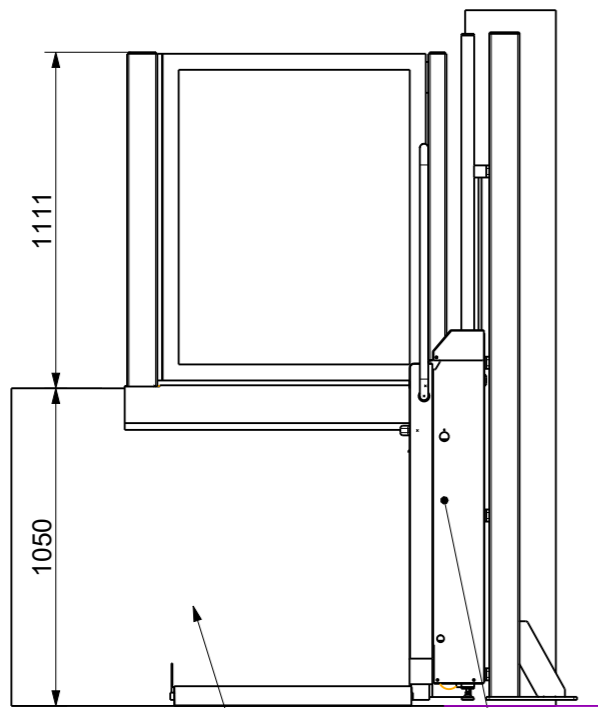
230V power supply line (cable 3x1.5mm²) to the desired mounting point of the battery charger must be supplied on site. Additional earth connection on the rail/stanchions (min. 6mm²) required. Furthermore, fuse protection with a maximum of 13A and an earth-leakage circuit breaker with a tripping fault current of 0.03A must be provided. Adequate staircase lighting which is independent of a timer must be provided by the customer. A minimum light intensity of 50 lux must be available.

The operator guarantees that there are no supply lines (underfloor heating, electricity, gas, water pipes, etc.) in the area of the stanchions or wall fixings.

Shearing and crushing points that are closer than 100mm to non-contact protected moving parts of the system must be fully covered on site.

A full-surface rail covering in accordance with the applicable building regulations must be provided by the customer. The user should carry a fully functional mobile phone with him/her on each journey.

Dateiname des Zeichnungsobjektes: PLV9-ELIESCU		Dateityp: ASSEM	Dateiname der Zeichnung: PLV9-ELIESCU	
		Allgemeintol. DIN ISO 2768-m-H	Kanten DIN ISO 13715	Maßstab 1:25
				Werkstoff: Halbzeug: PLV9-11-00282
		Datum	Name	
		Bear. 25.10.2022	Mayrhofer	
		Gepr.		
		Norm		
				Zeichnungsnummer: ASC-025239
				Blatt1 1 Bl.
Zust.	Änderung	Datum	Nam. (Urspr.)	(Ers.f.): (Ers.d.):

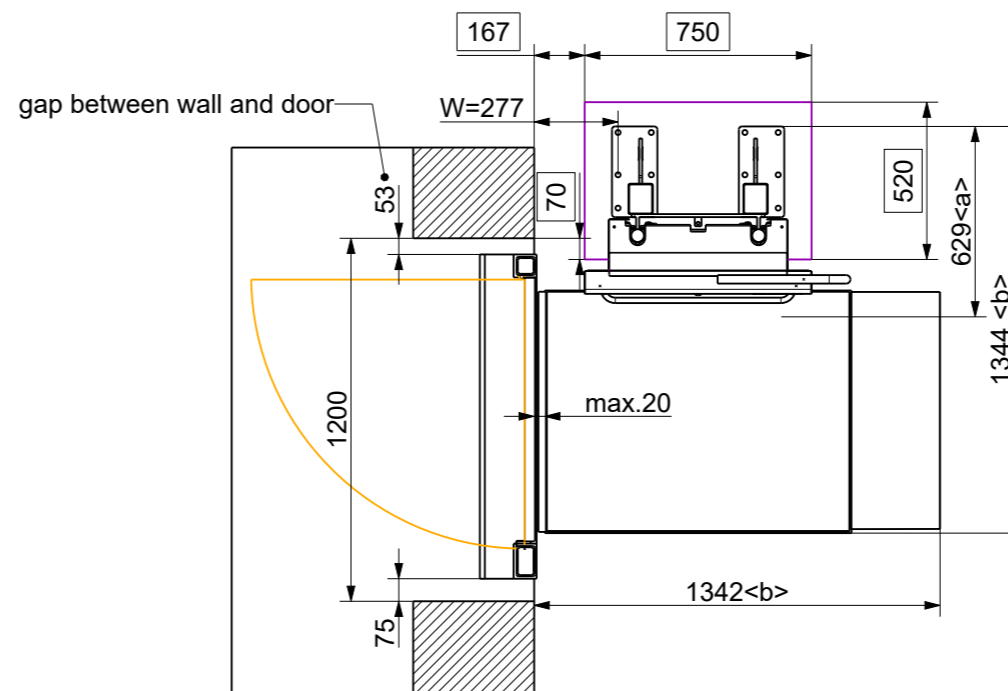


Platformlift PLV9
 Travel Height: 1050 mm
 Right hand (as viewed from lower level)
 Platform Size: 1000 x 800 mm
 Loading Capacity: 225kg
 Powder coated in standard RAL 9006
 Mounting: stanchions
 2x wireless handheld remotes
 Inside installation

300mm ramp downstairs side
 Door for upper landing DIN left

Production approval:
 I hereby order the lift system as shown on the drawing and confirm that the layout of the railway is correct. All natural measurements are based on facts given from you. Ascendor is not responsible for charges which are a result from wrong stated measurements. By confirming the installation drawing, I also accept the GTCs and the final associated offer.

date, sign



<a> ... required space platform closed
 ... required space platform open

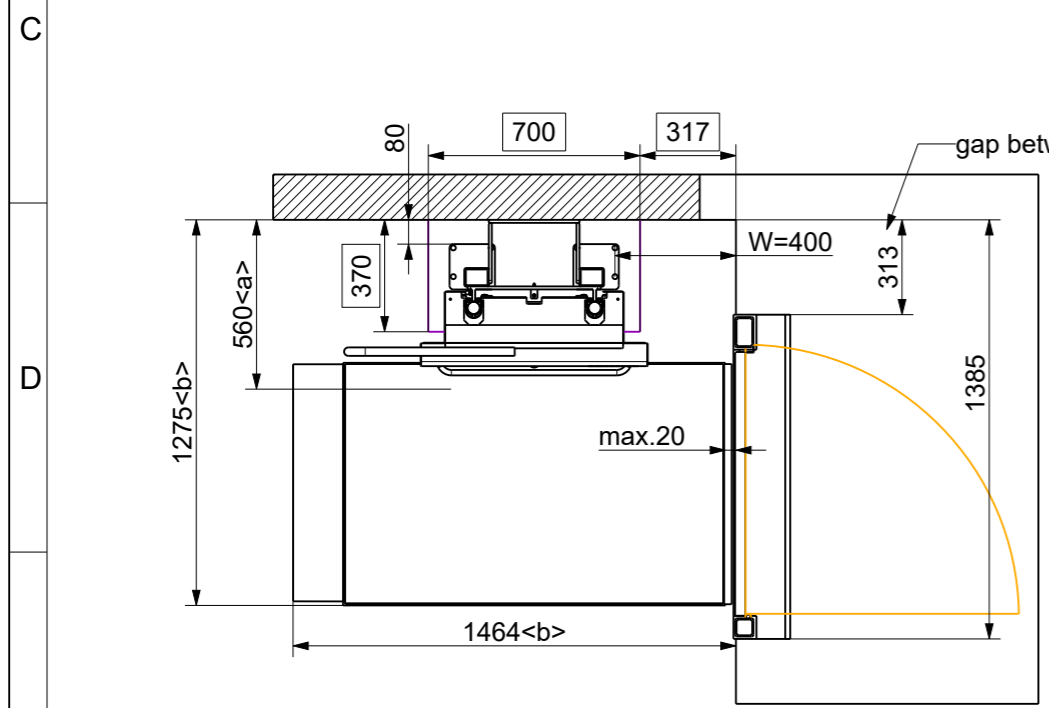
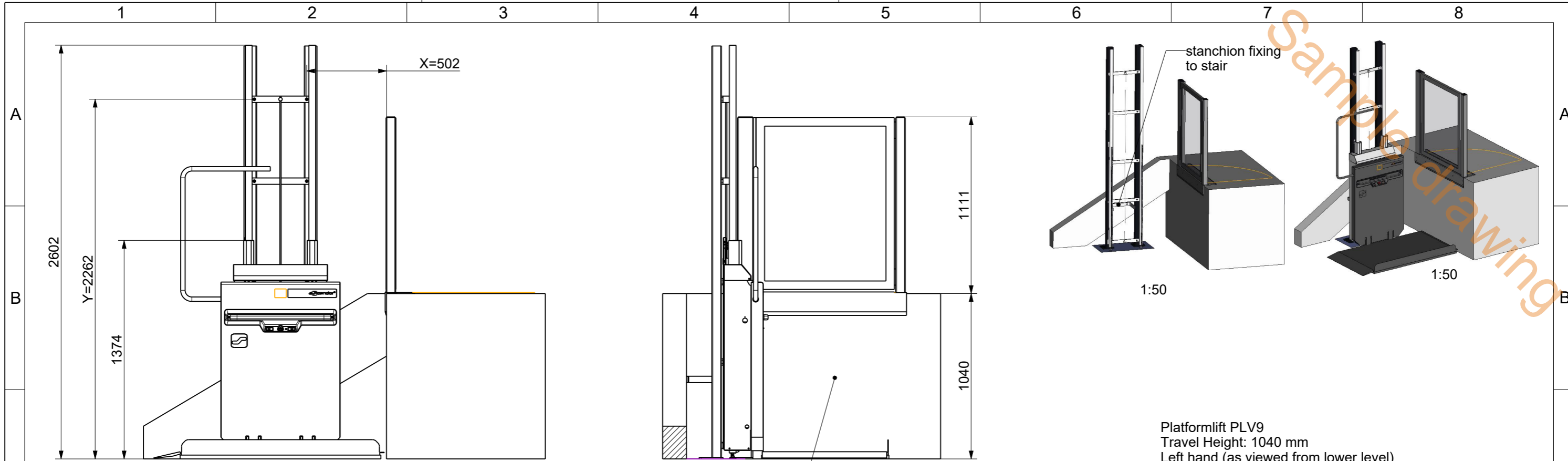
concrete foundation:
 - quality: C20/25
 - size: 750x520mm
 - depth: frost-proofed
 - flat surface

Stanchions 100x80mm
 galvanized and powder coated RAL 9006
 Length = 2200mm (2 pcs.)

230V power supply line (cable 3x1.5mm²) to the desired mounting point of the battery charger must be supplied on site. Additional earth connection on the rail/stanchions (min. 6mm²) required. Furthermore, fuse protection with a maximum of 13A and an earth-leakage circuit breaker with a tripping fault current of 0.03A must be provided. Adequate staircase lighting which is independent of a timer must be provided by the customer. A minimum light intensity of 50 lux must be available.
 The operator guarantees that there are no supply lines (underfloor heating, electricity, gas, water pipes, etc.) in the area of the stanchions or wall fixings.
 Shearing and crushing points that are closer than 100mm to non-contact protected moving parts of the system must be fully covered on site.
 A full-surface rail covering in accordance with the applicable building regulations must be provided by the customer. The user should carry a fully functional mobile phone with him/her on each journey.

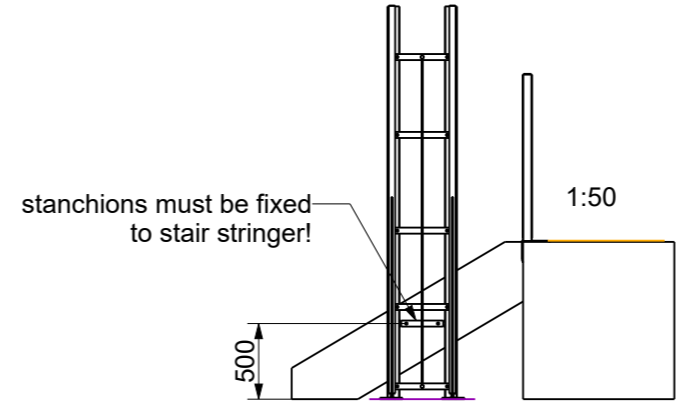
Dateiname des Zeichnungsobjektes: PLV9-FCM				Dateityp: ASSEM		Dateiname der Zeichnung: PLV9-FCM	
				Allgemeintol. DIN ISO 2768-m-H		Kanten DIN ISO 13715	
				Datum		Name	
				Bear. 21.04.2023		Mayrhofer	
				Gepr.			
				Norm			
						Benennung:	
						Zeichnungsnummer: ASC-028560	
						Blatt1 1 Bl.	
Zust. Änderung Datum Nam. (Urspr.)				(Ers.f.)		(Ers.d.)	





concrete foundation:
 - quality: C20/25
 - size: 700x370mm
 - depth: frost-proofed
 - flat surface

Stanchions 80x60mm
 powder coated RAL 9006
 Length = 2600mm (2 pcs.)



Platformlift PLV9
 Travel Height: 1040 mm
 Left hand (as viewed from lower level)
 Platform Size: 1250 x 800 mm
 Loading Capacity: 225kg
 Powder coated in standard RAL 9006
 Mounting: stanchions
 2x handheld remote control
 Indoors installation

Folding seat, made of stainless steel
 Door for upper landing DIN left
 Automatic door opener
 Fixing to the rear (for 80x60 stanchion mounting)

Production approval:
 I hereby order the lift system as shown on the drawing and confirm that the layout of the railway is correct. All natural measurements are based on facts given from you. Ascendor is not responsible for charges which are a result from wrong stated measurements. By confirming the installation drawing, I also accept the GTCs and the final associated offer.

date, sign

<a> ... required space platform closed
 ... required space platform open

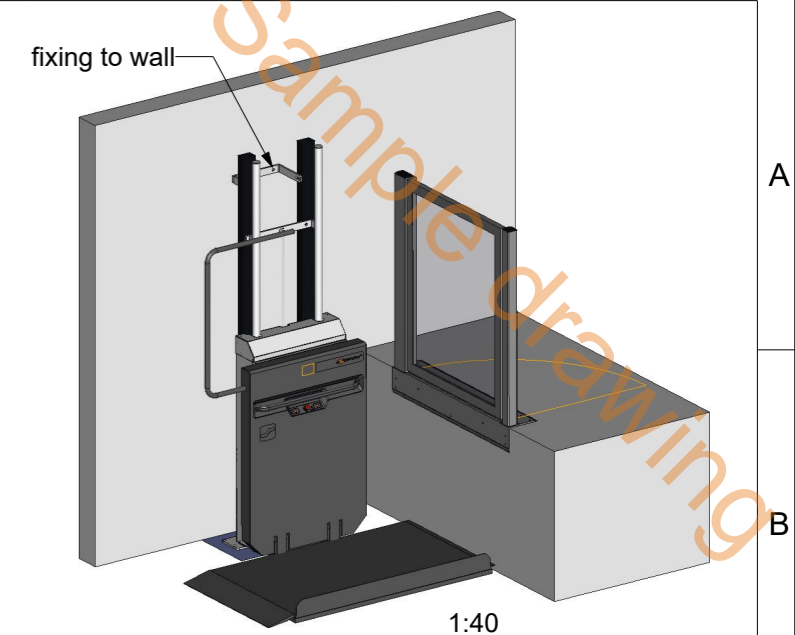
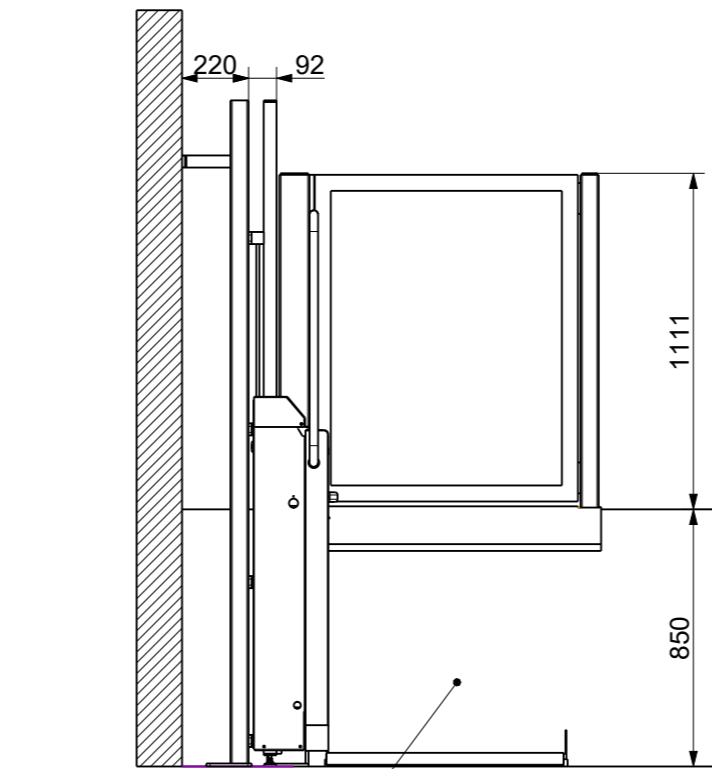
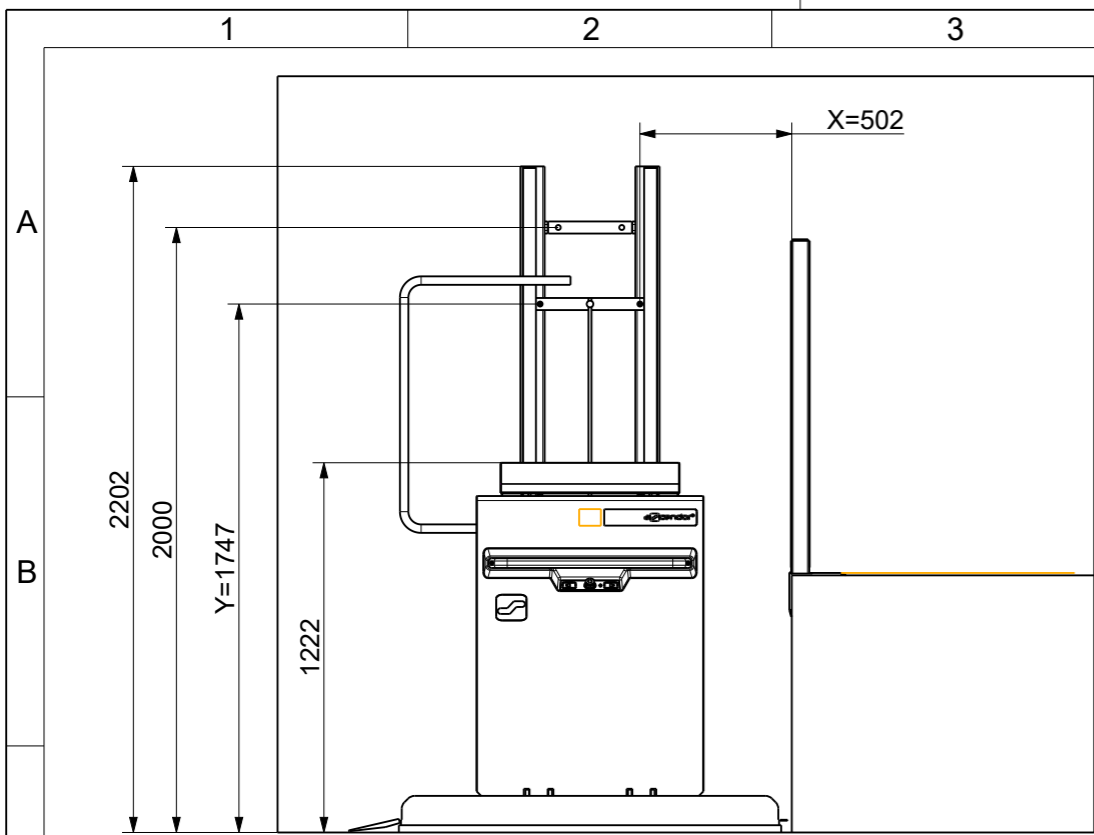
230V power supply line (cable 3x1.5mm²) to the desired mounting point of the battery charger must be supplied on site. Additional earth connection on the rail/stanchions (min. 6mm²) required. Furthermore, fuse protection with a maximum of 13A and an earth-leakage circuit breaker with a tripping fault current of 0.03A must be provided. Adequate staircase lighting which is independent of a timer must be provided by the customer. A minimum light intensity of 50 lux must be available.

The operator guarantees that there are no supply lines (underfloor heating, electricity, gas, water pipes, etc.) in the area of the stanchions or wall fixings.

Shearing and crushing points that are closer than 100mm to non-contact protected moving parts of the system must be fully covered on site.

A full-surface rail covering in accordance with the applicable building regulations must be provided by the customer. The user should carry a fully functional mobile phone with him/her on each journey.

Dateiname des Zeichnungsobjektes: PLV9-JAMES		Dateityp: ASSEM	Dateiname der Zeichnung: PLV9-JAMES	
Allgemeintol. DIN ISO 2768-m-H		Kanten DIN ISO 13715	Maßstab 1:25	
			Werkstoff: Halbzeug: PLV9-12-00315	
		Datum	Name	
		Bear. 23.08.2023	Mayrhofer	
		Gepr.		
		Norm		
		Benennung:		
		Zeichnungsnummer: ASC-028414		Blatt1
				1 Bl.
Zust.	Änderung	Datum	Nam. (Urspr.)	(Ers.f.) (Ers.d.)



Platfornlift PLV9
 Travel Height: 850 mm
 Left hand (as viewed from lower level)
 Platform Size: 1250 x 800 mm
 Loading Capacity: 225kg
 Powder coated in standard RAL 9006
 Mounting: stanchions
 1x handheld remote control
 2x wall mounted remote control incl. keyswitch
 Outdoors installation

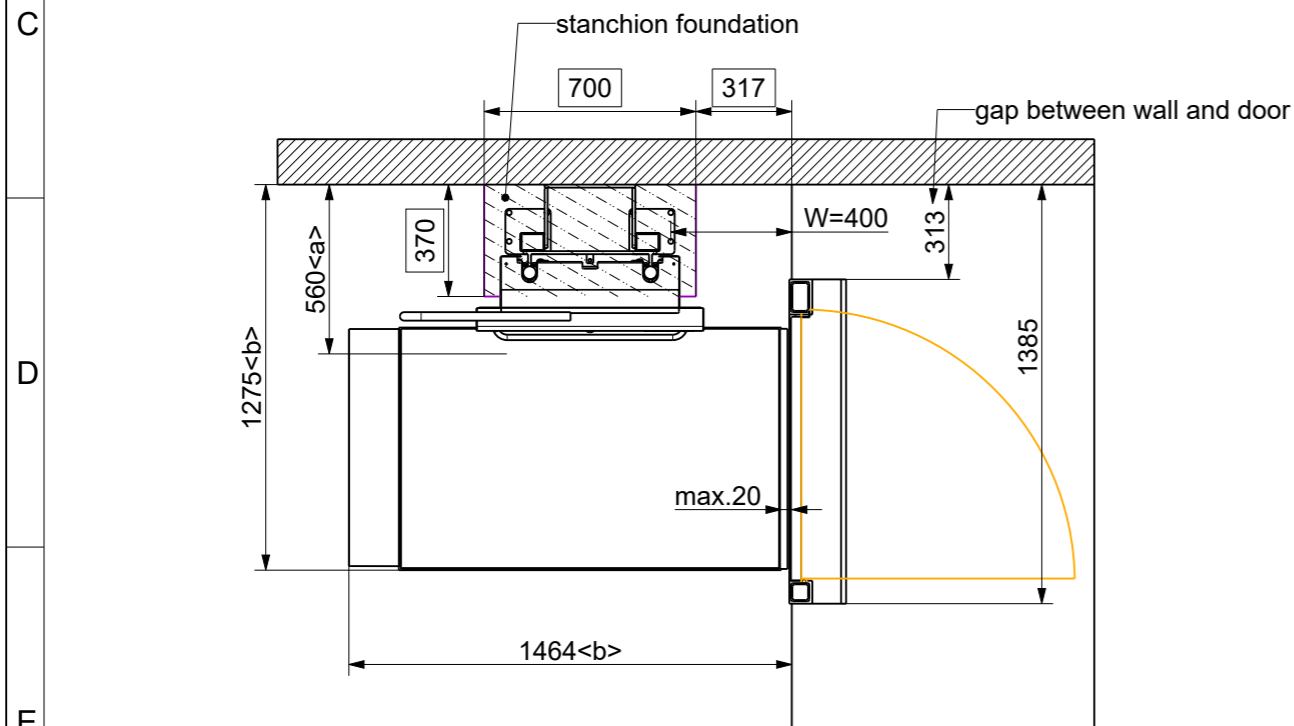
Door for upper landing DIN left
 Motor for top door
 Fixing to the rear (for 80x60 stanchion mounting)

LIBÉRATION DE LA PRODUCTION :
 Par la présente, j'autorise Ascendor GmbH à fabriquer ce système de levage et je certifie que le placement du rail est correct et que toutes les spécifications sont exactes.
 Ascendor n'est pas responsable des erreurs basées sur des mesures incorrectes et ne sera pas responsable des coûts encourus en conséquence.
 En confirmant le plan d'installation, j'accepte également les CGV et l'offre finale associée.

full-faced, smooth surface

concrete foundation:
 - quality: C20/25
 - size: 700x370mm
 - depth: frost-proofed
 - flat surface

 Stanchions 80x60mm
 powder coated RAL 9006
 Length = 2200mm (2 pcs.)



<a> ... required space platform closed
 ... required space platform open

Ligne d'alimentation 230V (câble 3x1,5mm²) jusqu'au point d'installation souhaité du chargeur sur le site. En outre, la protection par fusible doit être assurée avec un maximum de 13A et un disjoncteur différentiel avec un courant de défaut de déclenchement de 0,03A. Une connexion supplémentaire à la terre sur le rail de guidage/les supports (min. 6mm²) est nécessaire.

Un éclairage suffisant des escaliers, indépendant d'un interrupteur horaire, doit être prévu sur place. Une intensité lumineuse minimale de 50 lux doit être fournie.

L'exploitant garantit qu'il n'y a pas de conduites d'alimentation (chauffage par le sol, électricité, gaz, conduites d'eau, etc.) dans la zone du support ou des fixations murales.

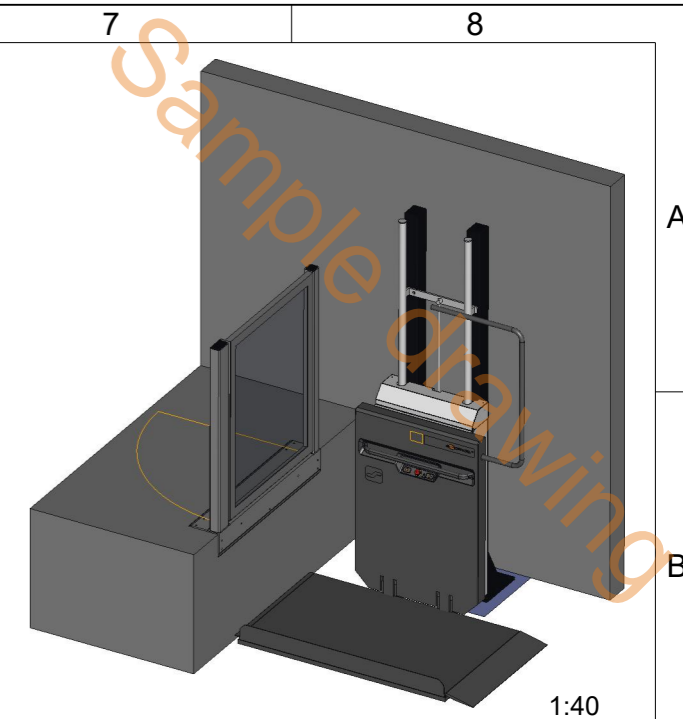
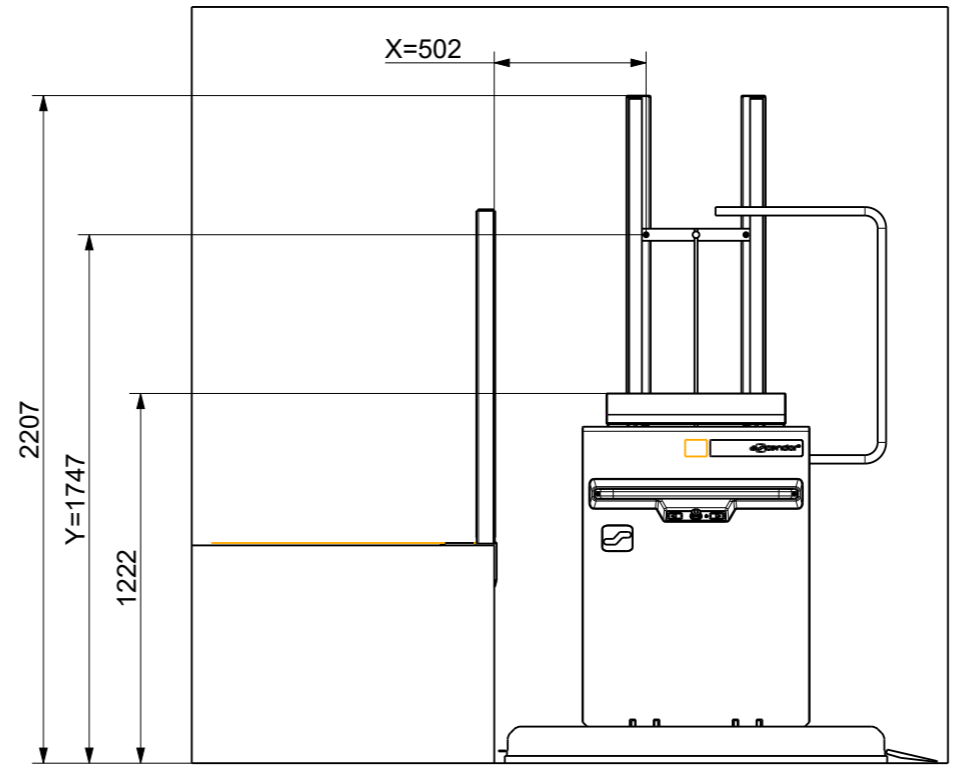
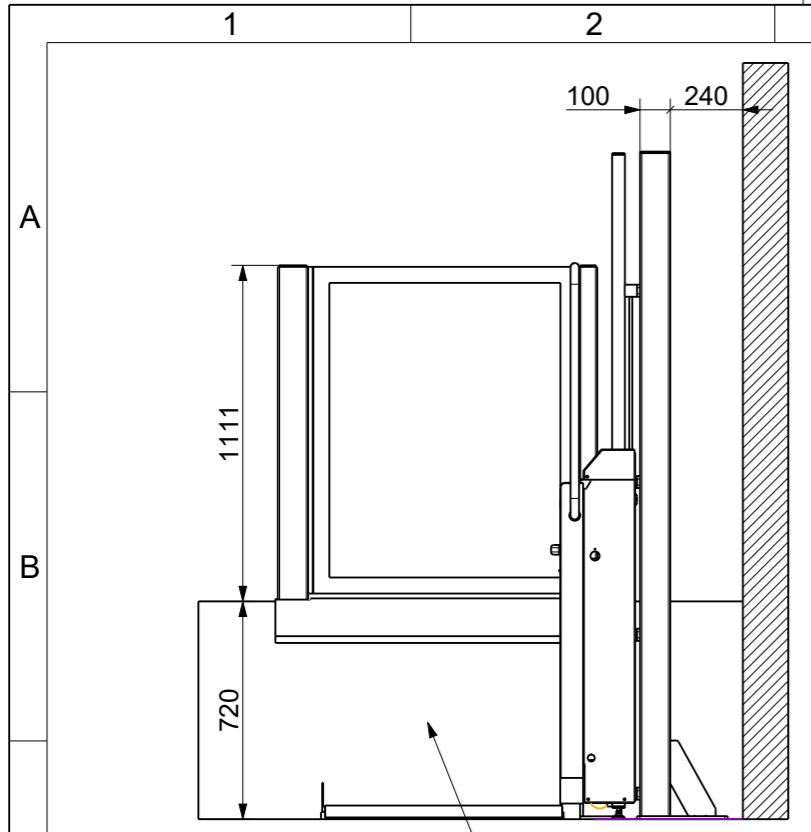
Les points de cisaillement et de pincement qui se trouvent à moins de 100 mm des parties mobiles sans contact du système doivent être entièrement couverts sur place.

Le client doit prévoir un revêtement complet de la voie, conformément aux règles de construction applicables.

Un téléphone portable en état de marche doit être porté par l'utilisateur lors de chaque voyage.

Date, Signature

Dateiname des Zeichnungsobjektes: PLV9-LAMBION		Dateityp: ASSEM	Dateiname der Zeichnung: PLV9-LAMBION	
		Allgemeintol. DIN ISO 2768-m-H	Kanten DIN ISO 13715	Maßstab 1:25
				Werkstoff: Halbzeug: PLV9-12-00316
				Benennung:
		Datum	Name	
		Bear.	16.08.2023	Mayrhofer
		Gepr.		
		Norm		
				Zeichnungsnummer: ASC-028407
				Blatt1 1 Bl.
Zust.	Änderung	Datum	Nam. (Urspr.)	(Ers.f.:) (Ers.d.):

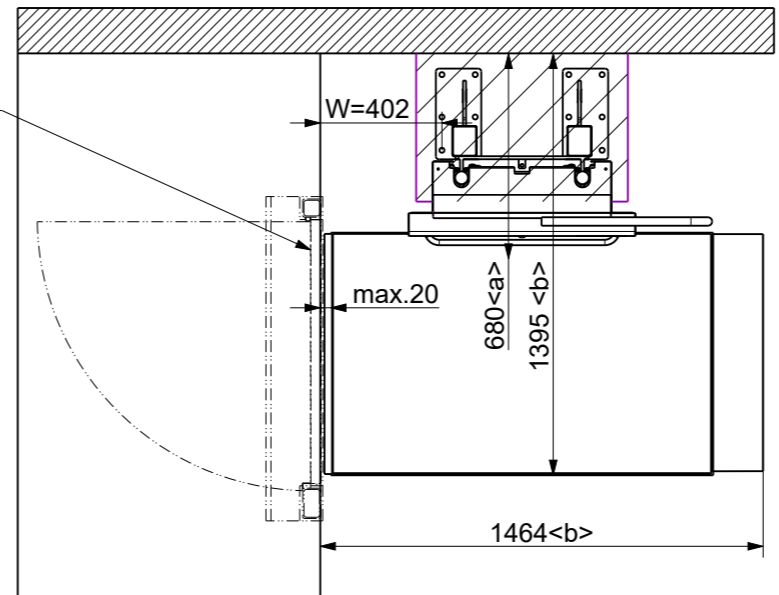


Platformlift PLV9
 Travel Height: 720 mm
 Platform Size: 1250 x 800 mm
 Loading Capacity: 225kg
 Colour: Powder coated in standard RAL 9006
 Mounting: stanchions
 Right hand device (as viewed from lower level)
 Inside installation
 2x Wall mounted operating unit incl. keyswitch

Stanchions; free standing

Production approval:
 I hereby order the lift system as shown on the drawing and confirm that the layout of the railway is correct. All natural measurements are based on facts given from you. Ascendor is not responsible for charges which are a result from wrong stated measurements. By confirming the installation drawing, I also accept the GTCs and the final associated offer.

date, sign



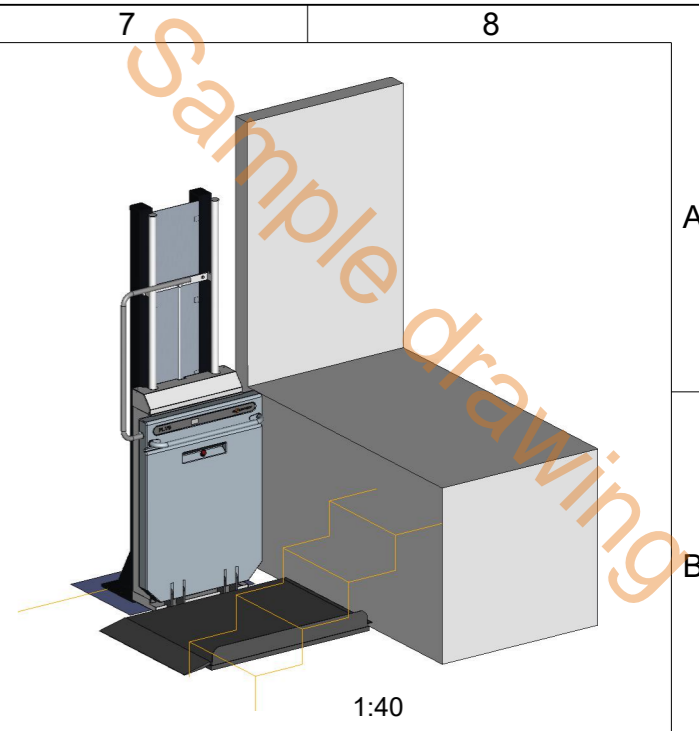
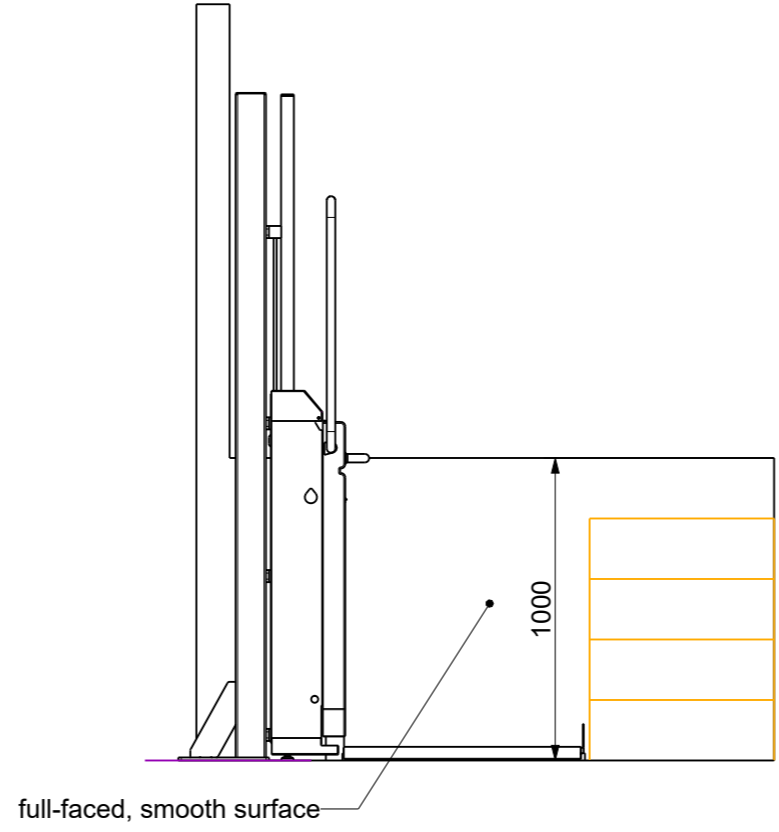
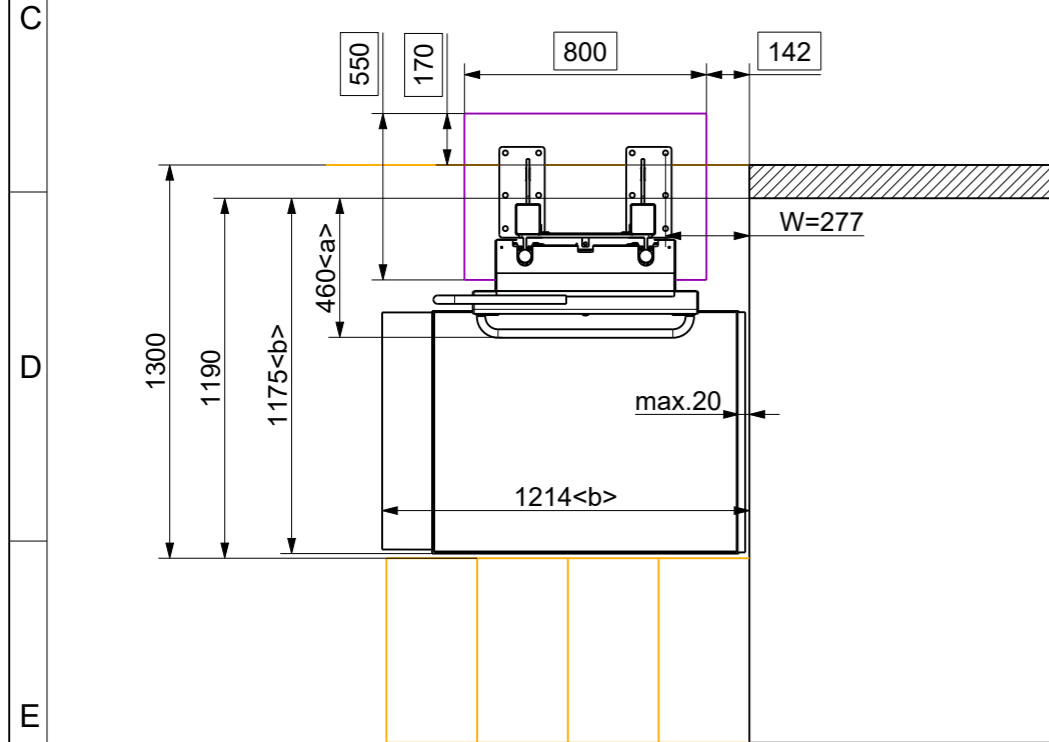
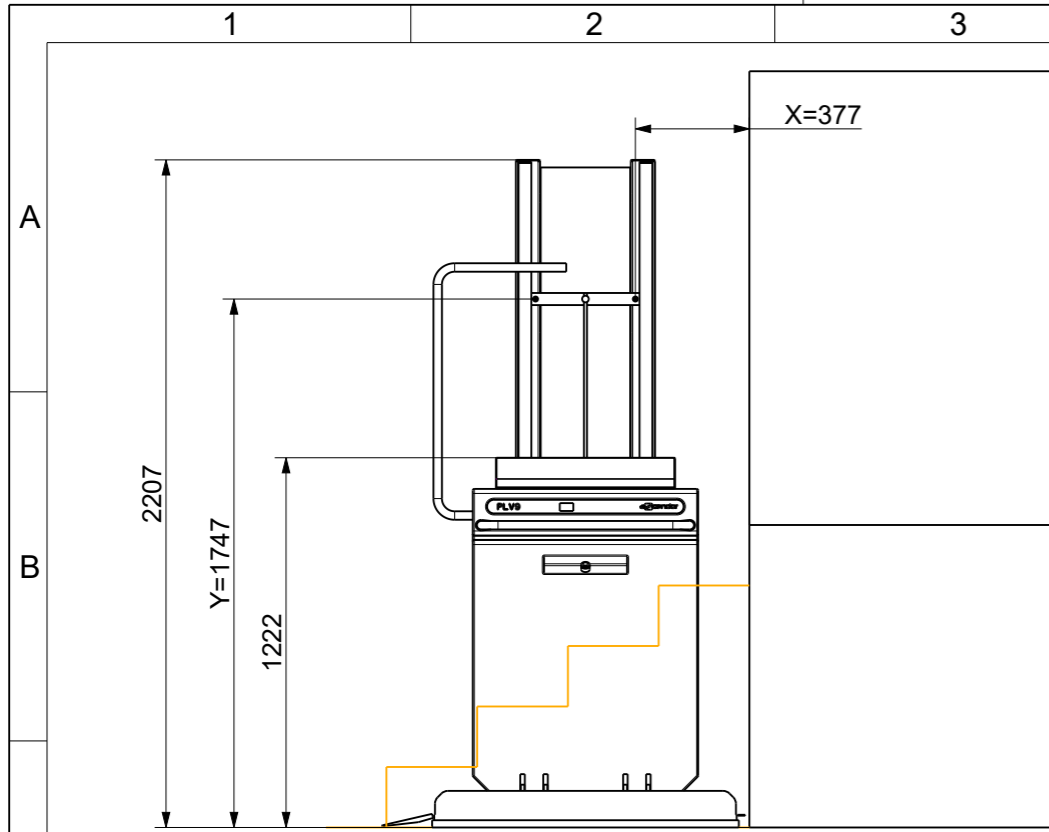
Stanchions 100x80mm
 galvanized and powder coated RAL 9006
 Length = 2200mm (2 pcs.)

<a> ... required space platform closed
 ... required space platform open

230V power supply line (cable 3x1.5mm²) to the desired mounting point of the battery charger must be supplied on site. Additional earth connection on the rail/stanchions (min. 6mm²) required. Furthermore, fuse protection with a maximum of 13A and an earth-leakage circuit breaker with a tripping fault current of 0.03A must be provided. Adequate staircase lighting which is independent of a timer must be provided by the customer. A minimum light intensity of 50 lux must be available. The operator guarantees that there are no supply lines (underfloor heating, electricity, gas, water pipes, etc.) in the area of the stanchions or wall fixings. Shearing and crushing points that are closer than 100mm to non-contact protected moving parts of the system must be fully covered on site. A full-surface rail covering in accordance with the applicable building regulations must be provided by the customer. The user should carry a fully functional mobile phone with him/her on each journey.

<a> ... Platzbedarf Plattform geschlossen
 ... Platzbedarf Plattform offen

Dateiname des Zeichnungsobjektes: PLV9-LEIDEN		Dateityp: ASSEM	Dateiname der Zeichnung: PLV9-LEIDEN	
		Allgemeintol. DIN ISO 2768-m-H	Kanten DIN ISO 13715	Maßstab 1:25
				Werkstoff: Halbzeug: PLV9-10-0xxxx
		Datum	Name	Benennung:
		Bear. 11.11.2022	Wolfmayr	
		Gepr.		
		Norm		
				Zeichnungsnummer: ANG-033793
				Blatt1 1 Bl.
Zust.	Änderung	Datum	Nam. (Urspr.)	(Ers.f.) (Ers.d.)



Platformlift PLV9
 Travel Height: 1000 mm
 Left hand (as viewed from lower level)
 Platform Size: 1000 x 800 mm
 Loading Capacity: 225kg
 Powder coated in standard RAL 9006
 Mounting: stanchions
 2x handheld remote control
 Outside installation

 Cover panels between stanchions in RAL 9006

Existing lift re-used
 Old Order: ASC-007921
 New Order: ASC-0xxxxx

Changes:
 -change from indoor to outdoor unit (by ASC)

concrete foundation:
 - quality: C20/25
 - size: 800x550mm
 - depth: frost-proofed
 - flat surface

Stanchions 100x80mm
 galvanized and powder coated RAL 9006
 Length = 2200mm (2 pcs.)

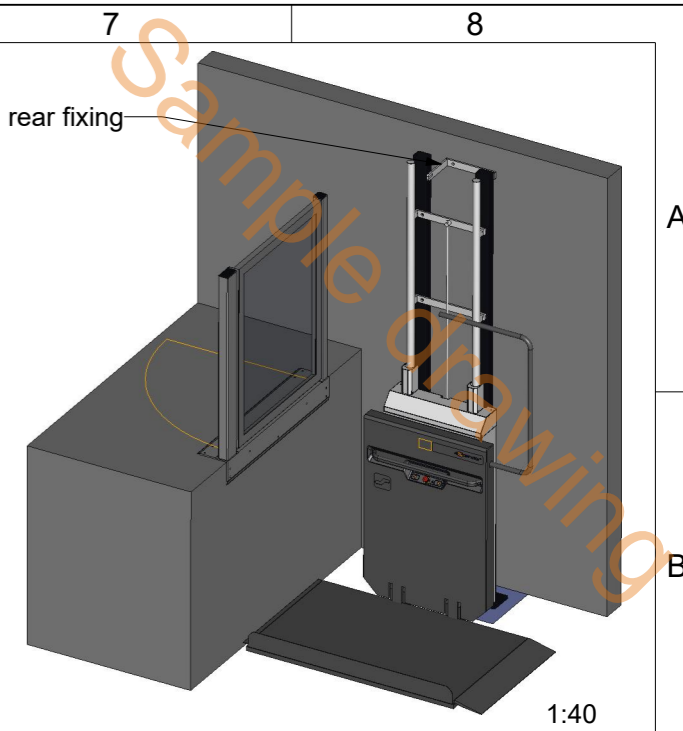
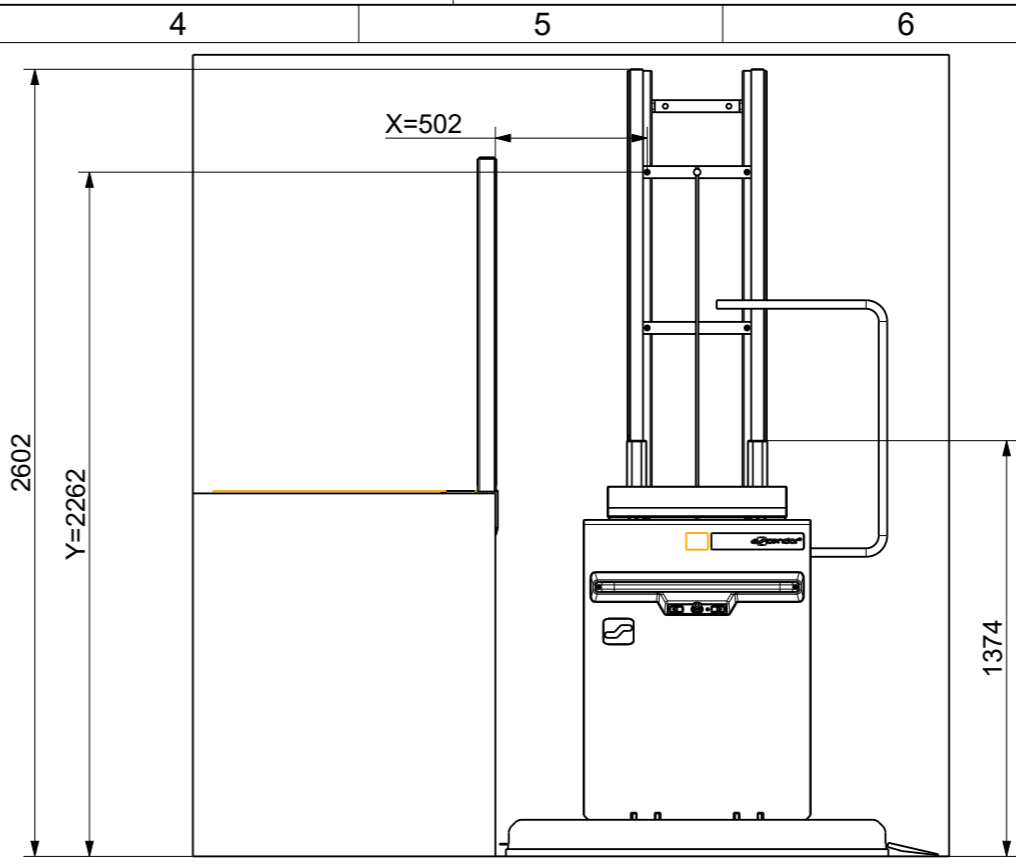
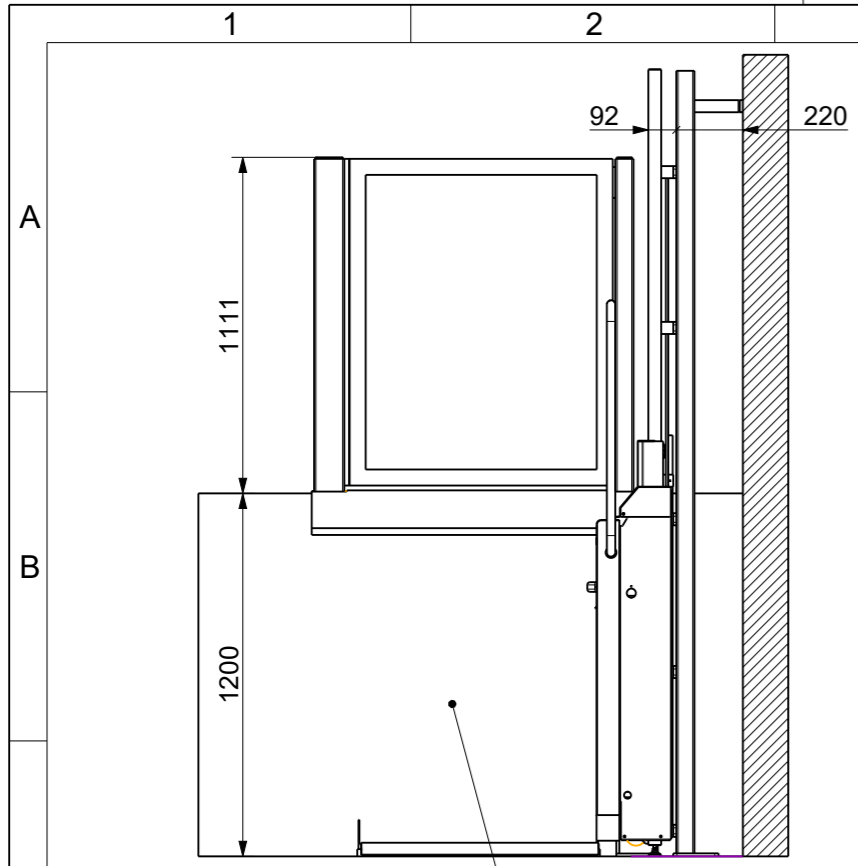
<a> ... required space platform closed
 ... required space platform open

Production approval:
 I hereby order the lift system as shown on the drawing and confirm that the layout of the railway is correct. All natural measurements are based on facts given from you. Ascendor is not responsible for charges which are a result from wrong stated measurements. By confirming the installation drawing, I also accept the GTCs and the final associated offer.

date,sign

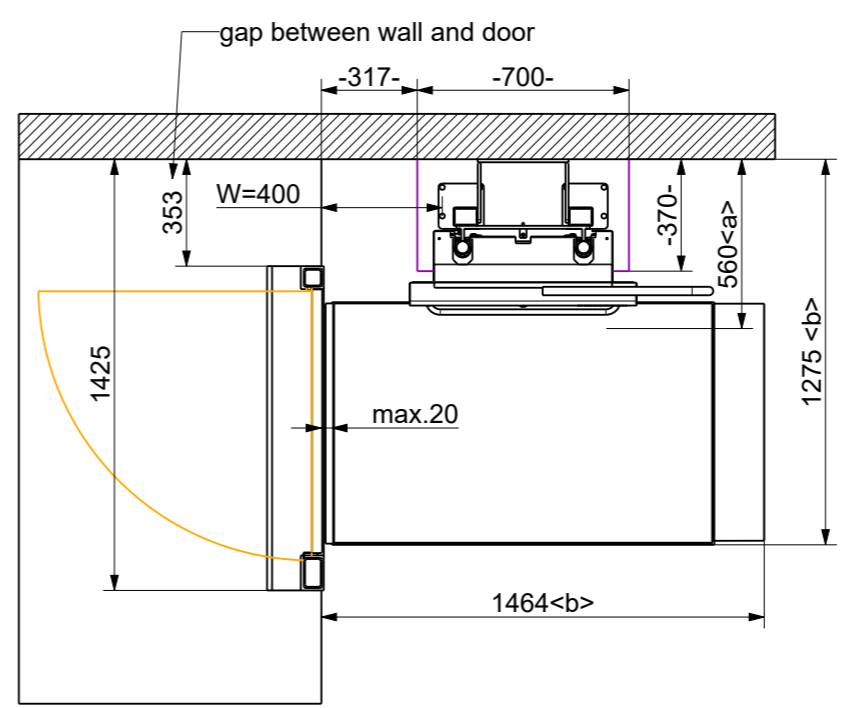
230V power supply line (cable 3x1.5mm²) to the desired mounting point of the battery charger must be supplied on site. Additional earth connection on the rail/stanchions (min. 6mm²) required. Furthermore, fuse protection with a maximum of 13A and an earth-leakage circuit breaker with a tripping fault current of 0.03A must be provided. Adequate staircase lighting which is independent of a timer must be provided by the customer. A minimum light intensity of 50 lux must be available.
 The operator guarantees that there are no supply lines (underfloor heating, electricity, gas, water pipes, etc.) in the area of the stanchions or wall fixings.
 Shearing and crushing points that are closer than 100mm to non-contact protected moving parts of the system must be fully covered on site.
 A full-surface rail covering in accordance with the applicable building regulations must be provided by the customer. The user should carry a fully functional mobile phone with him/her on each journey.

Dateiname des Zeichnungsobjektes: PLV9-LUBLIN				Dateityp: ASSEM		Dateiname der Zeichnung: PLV9-LUBLIN	
				Allgemeintol. DIN ISO 2768-m-H		Kanten DIN ISO 13715	
				Datum		Name	
				Bear. 28.04.2023		Mayrhofer	
				Gepr.			
				Norm			
						Benennung:	
						Maßstab 1:25	
						Werkstoff: Halbzeug: PLV9-02-00038	
						Zeichnungsnummer: ANG-035570	
						Blatt1 1 Bl.	
Zust.	Änderung	Datum	Nam. (Urspr.)	(Ers.f.)		(Ers.d.)	



Platformlift PLV9
 Travel Height: 1200 mm
 Platform Size: 1250 x 800 mm
 Loading Capacity: 225kg
 Colour: special RAL 7021, Black gray
 Mounting: stanchions
 Right hand device (as viewed from lower level)
 Outside installation
 2x Wall mounted operating unit incl. keyswitch

Door for upper landing, DIN left, in special RAL 7021
 Fixing to the rear (for stanchion mounting)



Production approval:
 I hereby order the lift system as shown on the drawing and confirm that the layout of the railway is correct. All natural measurements are based on facts given from you. Ascendor is not responsible for charges which are a result from wrong stated measurements. By confirming the installation drawing, I also accept the GTCs and the final associated offer.

date, sign _____

concrete foundation:
 - quality: C20/25
 - size: 700x370mm
 - depth: frost-proofed
 - flat surface

Stanchions 80x60mm
 powder coated in special RAL 7021, Black gray

Length = 2600mm (2 pcs.)

<a> ... required space platform closed
 ... required space platform open

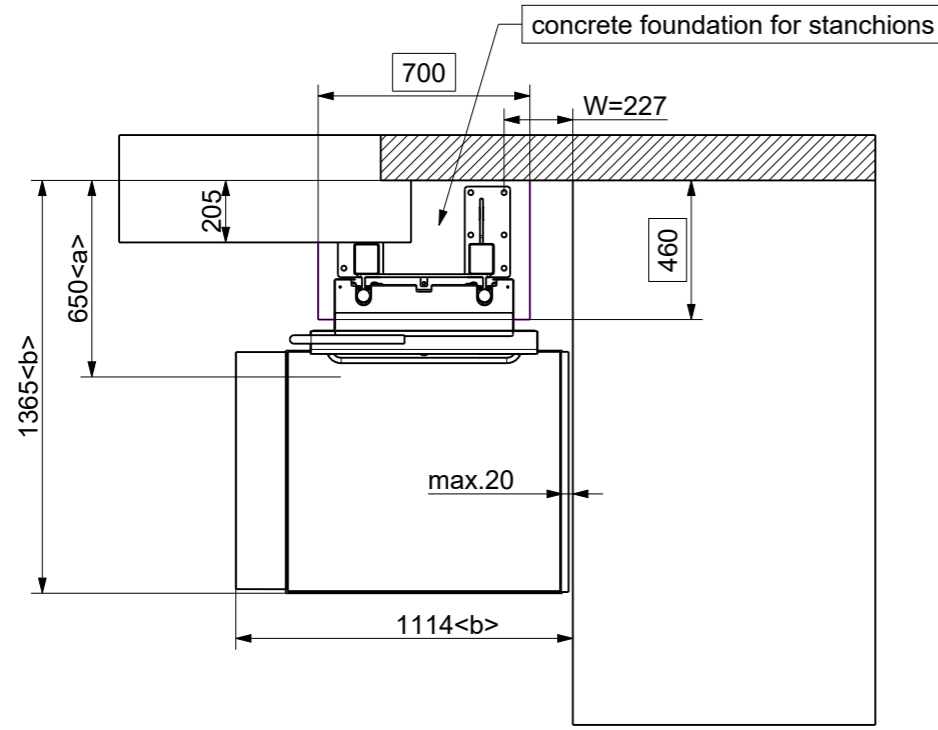
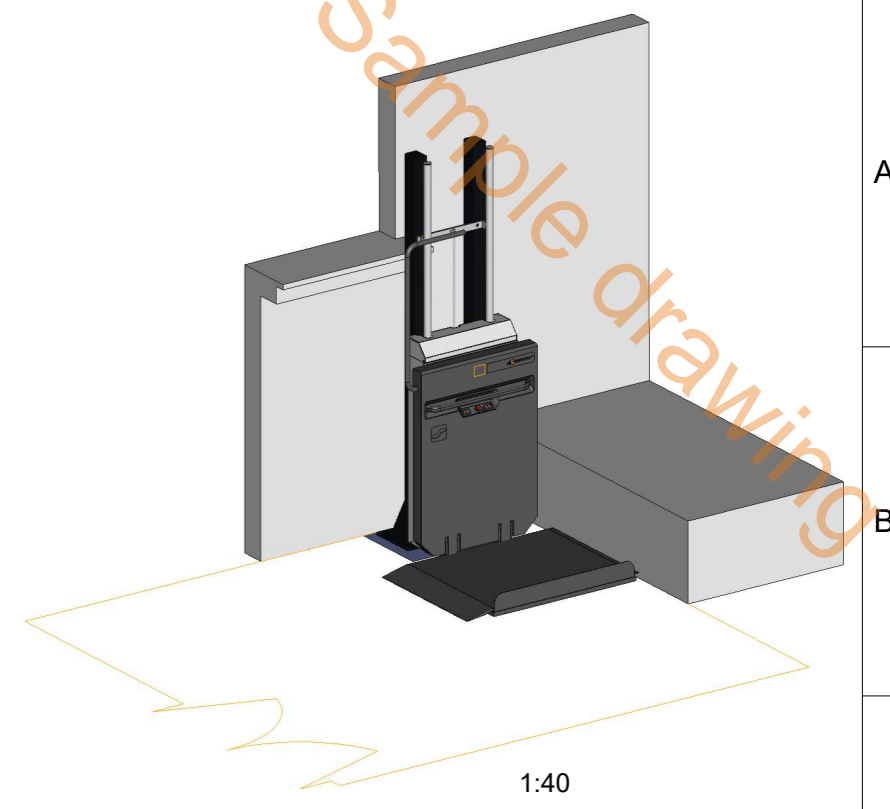
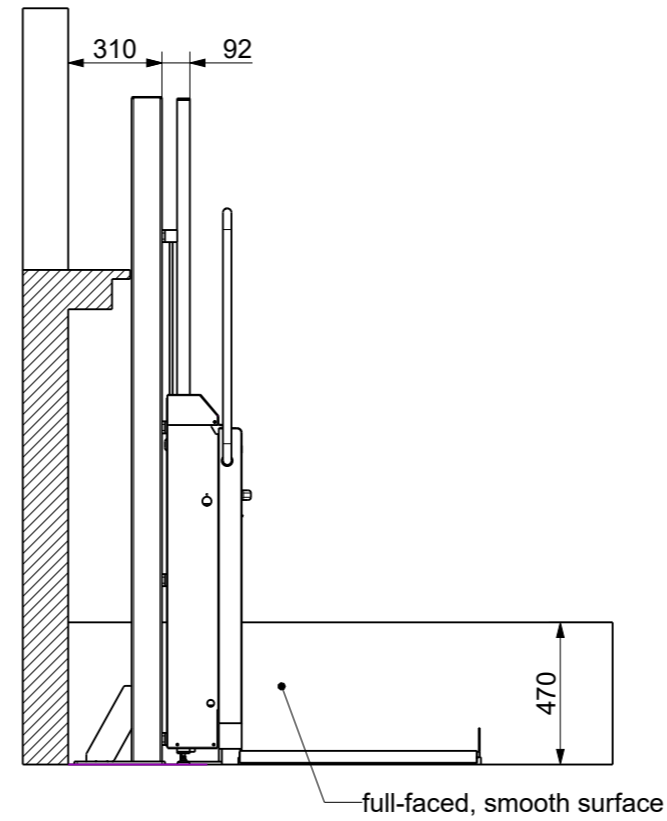
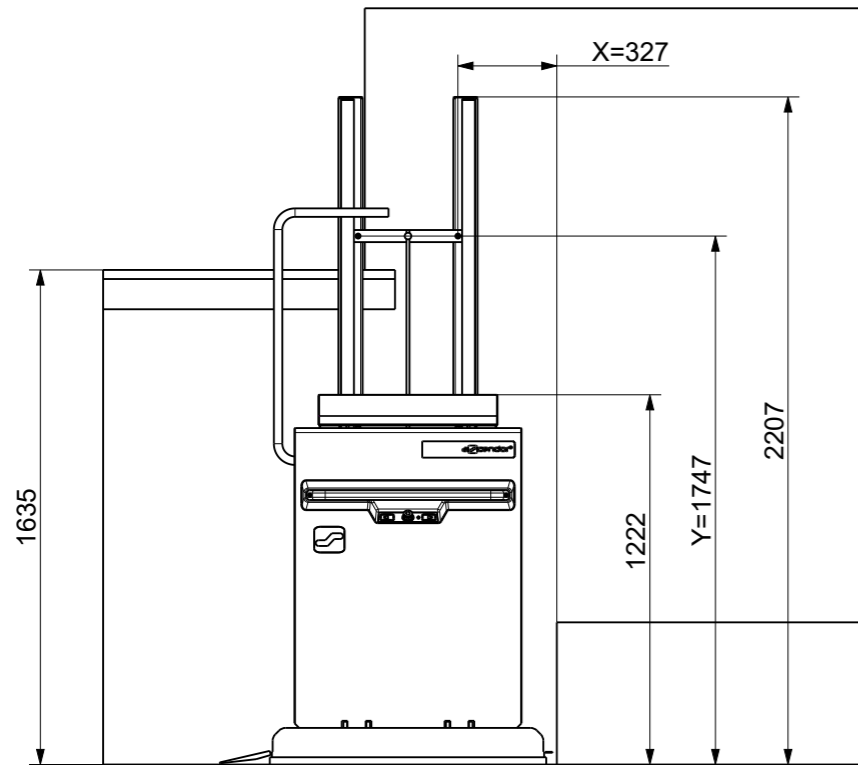
230V power supply line (cable 3x1.5mm²) to the desired mounting point of the battery charger must be supplied on site. Additional earth connection on the rail/stanchions (min. 6mm²) required. Furthermore, fuse protection with a maximum of 13A and an earth-leakage circuit breaker with a tripping fault current of 0.03A must be provided. Adequate staircase lighting which is independent of a timer must be provided by the customer. A minimum light intensity of 50 lux must be available.

The operator guarantees that there are no supply lines (underfloor heating, electricity, gas, water pipes, etc.) in the area of the stanchions or wall fixings.

Shearing and crushing points that are closer than 100mm to non-contact protected moving parts of the system must be fully covered on site.

A full-surface rail covering in accordance with the applicable building regulations must be provided by the customer. The user should carry a fully functional mobile phone with him/her on each journey.

Dateiname des Zeichnungsobjektes: PLV9-MARTINEZ				Dateityp: ASSEM	Dateiname der Zeichnung: PLV9-MARTINEZ		
				Allgemeintol. DIN ISO 2768-m-H	Kanten DIN ISO 13715	Maßstab 1:25	
						Werkstoff: Halbzeug: PLV9-10-0xxxx	
				Datum	Name	Benennung:	
				Bear.	18.11.2021		Mayrhofer
				Gepr.			
				Norm			
						Zeichnungsnummer: ANG-026295	
Zust.	Änderung	Datum	Nam. (Urspr.)			Blatt1 1 Bl.	
						(Ers.f.): (Ers.d.):	



concrete foundation:
 - quality: C20/25
 - size: 700x460mm
 - depth: frost-proofed
 - flat surface

Stanchions 100x80mm
 galvanized and powder coated RAL 9006
 Length = 2200mm (2 pcs.)

Platformlift PLV9
 Travel Height: 470 mm
 Platform Size: 900 x 800 mm
 Loading Capacity: 225kg
 Colour: Powder coated in standard RAL 9006
 Mounting: stanchions
 Left hand device (as viewed from lower level)
 Inside installation
 2x wireless handheld remotes

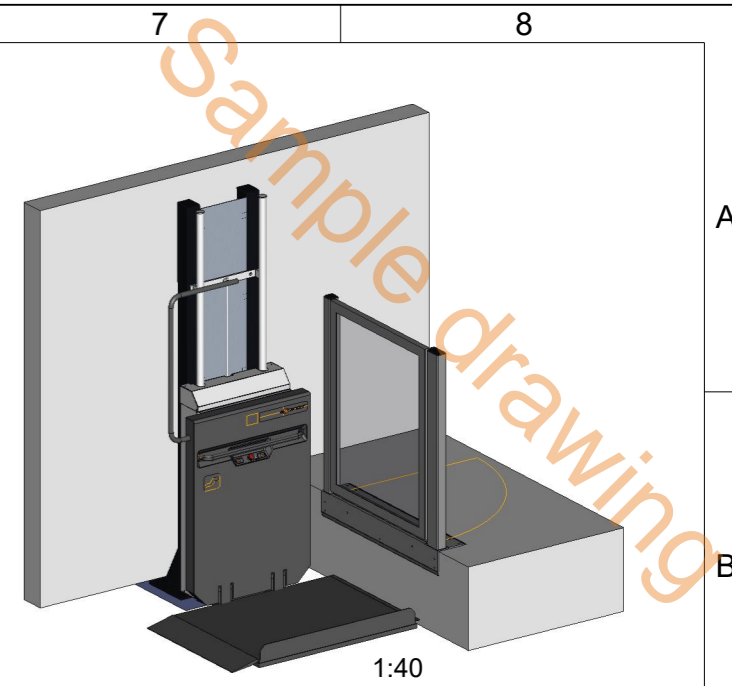
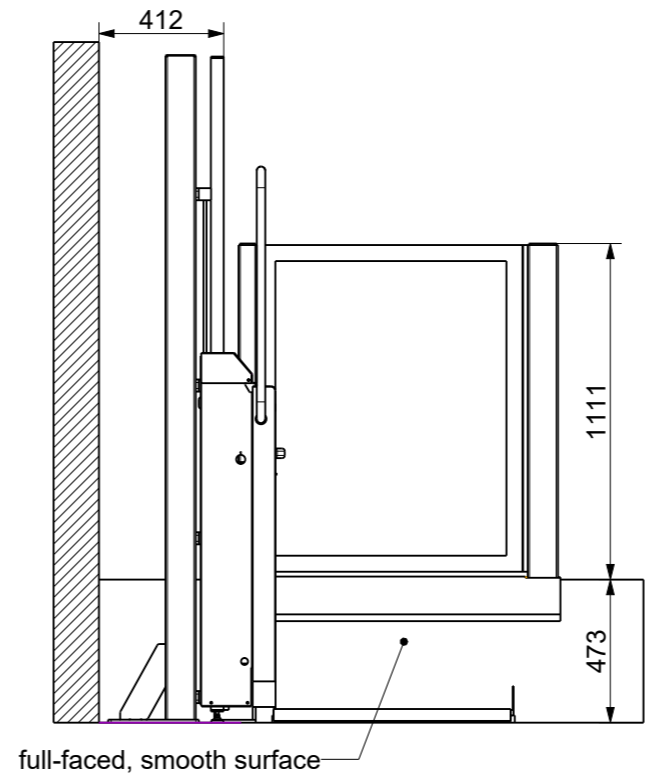
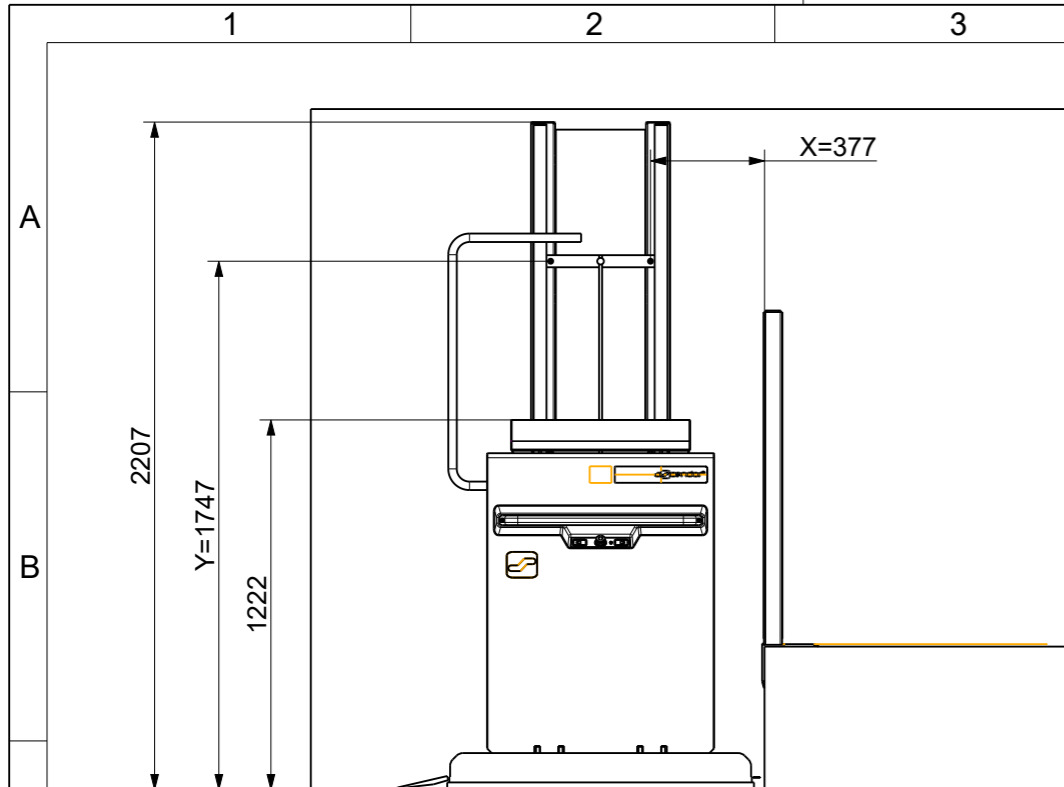
Production approval:
 I hereby order the lift system as shown on the drawing and confirm that the layout of the railway is correct. All natural measurements are based on facts given from you. Ascendor is not responsible for charges which are a result from wrong stated measurements. By confirming the installation drawing, I also accept the GTCs and the final associated offer.

 date, sign

<a> ... required space platform closed
 ... required space platform open

230V power supply line (cable 3x1.5mm²) to the desired mounting point of the battery charger must be supplied on site. Additional earth connection on the rail/stanchions (min. 6mm²) required. Furthermore, fuse protection with a maximum of 13A and an earth-leakage circuit breaker with a tripping fault current of 0.03A must be provided. Adequate staircase lighting which is independent of a timer must be provided by the customer. A minimum light intensity of 50 lux must be available. The operator guarantees that there are no supply lines (underfloor heating, electricity, gas, water pipes, etc.) in the area of the stanchions or wall fixings. Shearing and crushing points that are closer than 100mm to non-contact protected moving parts of the system must be fully covered on site. A full-surface rail covering in accordance with the applicable building regulations must be provided by the customer. The user should carry a fully functional mobile phone with him/her on each journey.

Dateiname des Zeichnungsobjektes: PLV9-NEGULESCU				Dateityp: ASSEM		Dateiname der Zeichnung: PLV9-NEGULESCU	
				Allgemeintol. DIN ISO 2768-m-H		Kanten DIN ISO 13715	
				Datum		Name	
				Bear. 03.11.2022		Mayrhofer	
				Gepr.			
				Norm			
						Benennung:	
						Maßstab 1:25	
						Werkstoff: Halbzeug: PLV9-11-00281	
						Zeichnungsnummer: ASC-025231	
						Blatt1 1 Bl.	
Zust.	Änderung	Datum	Nam. (Urspr.)	(Ers.f.):		(Ers.d.):	



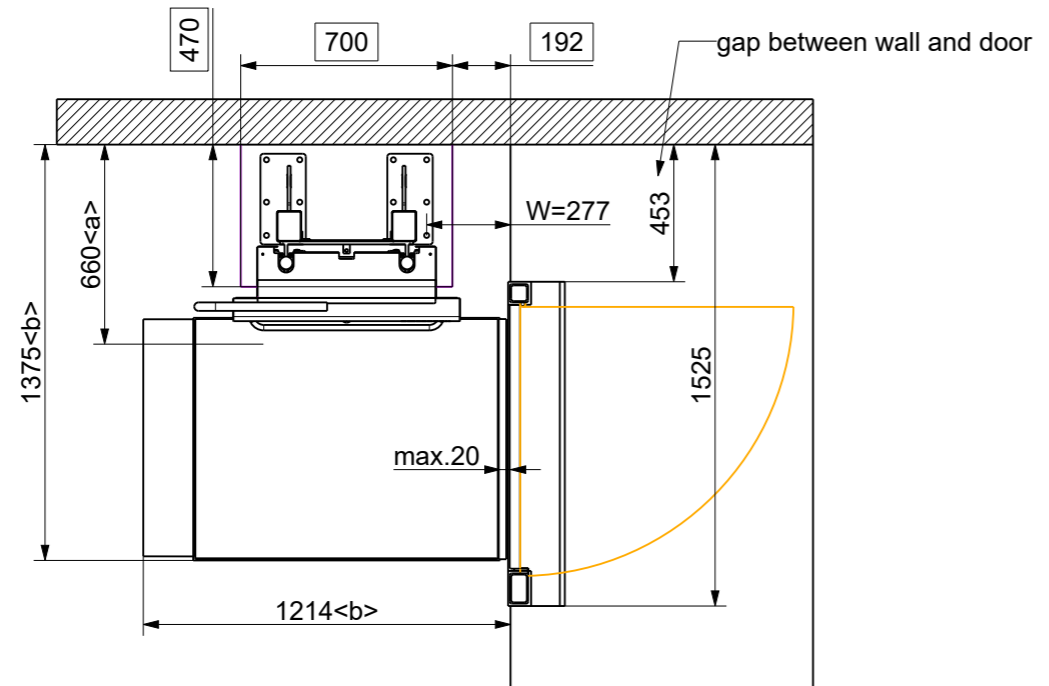
Platformlift PLV9
 Travel Height: 473 mm
 Left hand (as viewed from lower level)
 Platform Size: 1000 x 800 mm
 Loading Capacity: 225kg
 Powder coated in standard RAL 9006
 Mounting: stanchions
 2x wall mounted remote control incl. keyswitch
 Inside installation

Door for upper landing DIN right
 Cover panels between stanchions in RAL 9006

Production approval:
 I hereby order the lift system as shown on the drawing and confirm that the layout of the railway is correct. All natural measurements are based on facts given from you.
 Ascendor is not responsible for charges which are a result from wrong stated measurements.
 By confirming the installation drawing, I also accept the GTCs and the final associated offer.

concrete foundation:
 - quality: C20/25
 - size: 700x470mm
 - depth: frost-proofed
 - flat surface

Stanchions 100x80mm
 powder coated RAL 9006
 Length = 2200mm (2 pcs.)

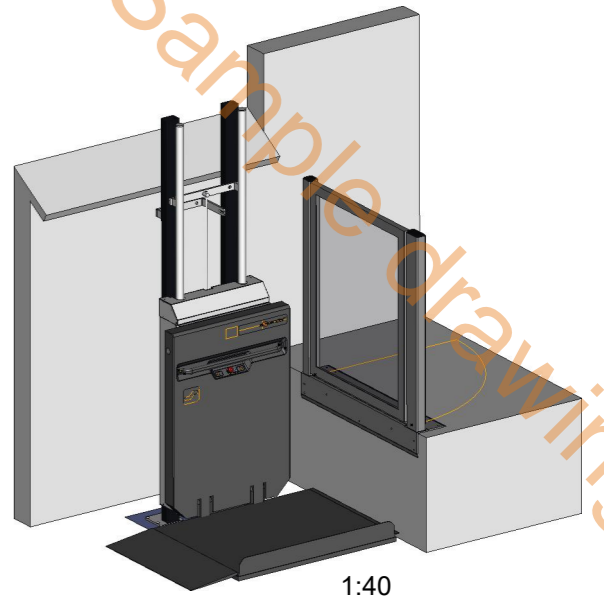
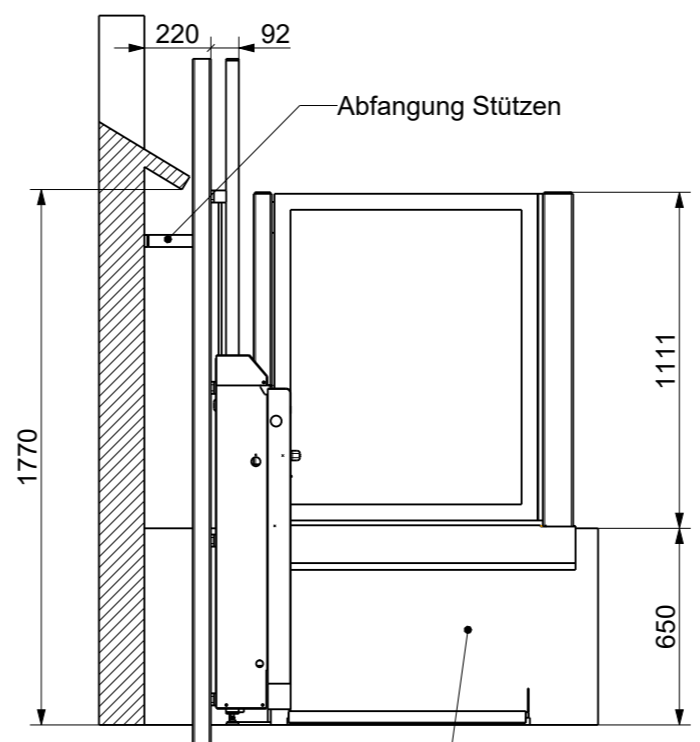
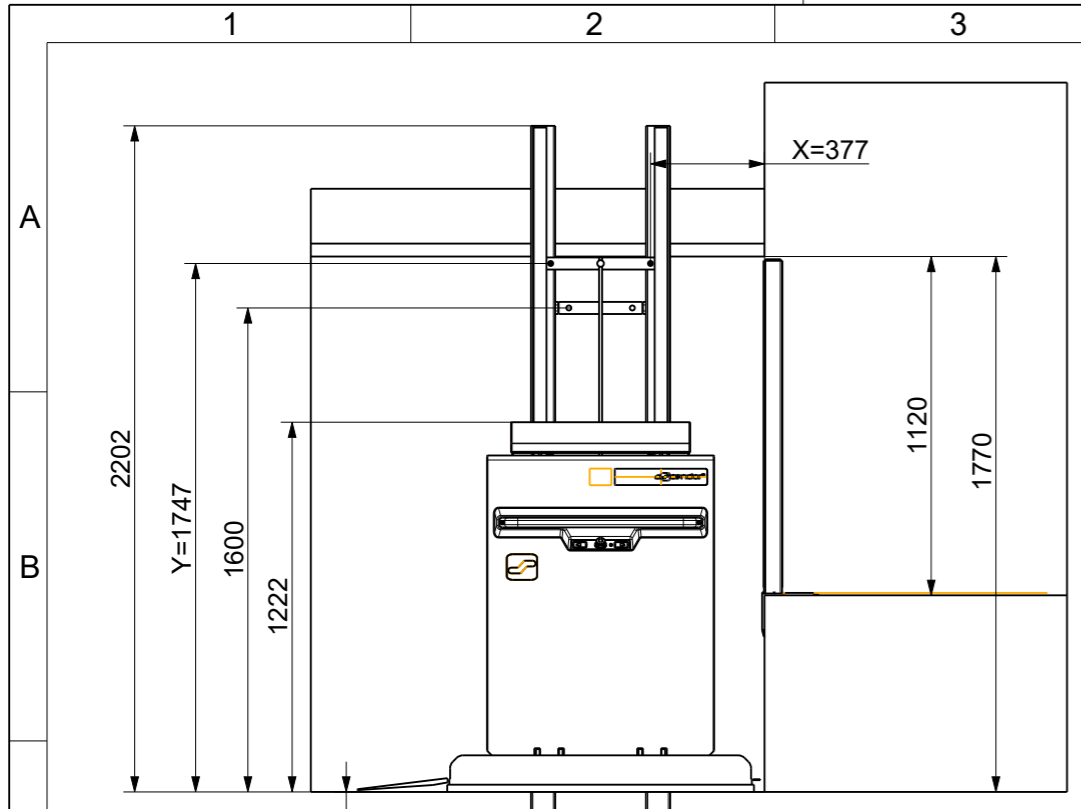


<a> ... required space platform closed
 ... required space platform open

230V power supply line (cable 3x1.5mm²) to the desired mounting point of the battery charger must be supplied on site. Additional earth connection on the rail/stanchions (min. 6mm²) required. Furthermore, fuse protection with a maximum of 13A and an earth-leakage circuit breaker with a tripping fault current of 0.03A must be provided. Adequate staircase lighting which is independent of a timer must be provided by the customer. A minimum light intensity of 50 lux must be available.
 The operator guarantees that there are no supply lines (underfloor heating, electricity, gas, water pipes, etc.) in the area of the stanchions or wall fixings.
 Shearing and crushing points that are closer than 100mm to non-contact protected moving parts of the system must be fully covered on site.
 A full-surface rail covering in accordance with the applicable building regulations must be provided by the customer.
 The user should carry a fully functional mobile phone with him/her on each journey.

date, sign _____

Dateiname des Zeichnungsobjektes: PLV9-SANDAKER				Dateityp: ASSEM	Dateiname der Zeichnung: PLV9-SANDAKER	
				Allgemeintol. DIN ISO 2768-m-H	Kanten DIN ISO 13715	Maßstab 1:25
				Werkstoff: Halbzeug: PLV9-		
				Benennung:		
				Datum	Name	
				Bear.	22.05.2023	Mayrhofer
				Gepr.		
				Norm		
				Zeichnungsnummer: ANG-035753		Blatt1 1 Bl.
Zust.	Änderung	Datum	Nam. (Urspr.)	(Ers.f.)	(Ers.d.)	

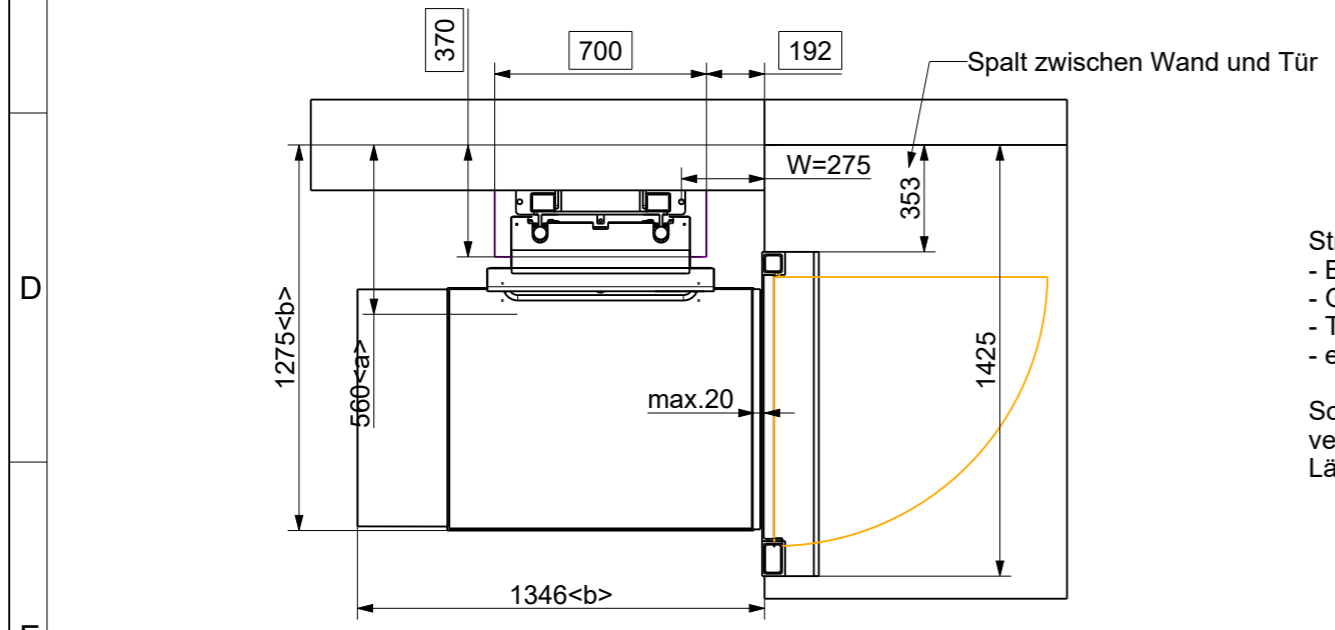


Plattformlift PLV9
 Förderhöhe: 650 mm
 Montage Links (Ansicht von unten)
 Plattformgröße: 1000 x 800 mm
 Tragfähigkeit: 225kg
 Farbe: Standard RAL 9006
 Stützenmontage
 2x Funkhandsender
 Außenanlage

300mm Auffahrrampe Talseitig
 Tür für obere Haltestelle DIN Rechts
 Abfangung nach hinten (bei Stützenmontage)

80 Fundamenthöhe exakt einhalten, da Stützen vorgebohrt sind!

vollflächige, glatte Oberfläche



Streifenfundament:
 - Betongüte: C20/25
 - Größe: 700x370mm
 - Tiefe: frostsicher
 - ebene Oberfläche

Sonderstützen 80x60mm
 verzinkt und pulverbeschichtet in RAL9006
 Länge = 2280mm (2 Stk.)

PRODUKTIONSFREIGABE:
 Hiermit beauftrage ich die Ascendor GmbH mit der Fertigung dieser Liftanlage und bestätige, dass die Platzierung der Fahrbahn richtig ist und alle Angaben korrekt sind.
 Ascendor ist nicht verantwortlich für Fehler, die auf falschen Maßangaben beruhen und übernimmt keinerlei daraus entstandene Kosten.
 Mit der Bestätigung der Einbauzeichnung akzeptiere ich auch die AGBs und das letztgültige zugehörige Angebot.

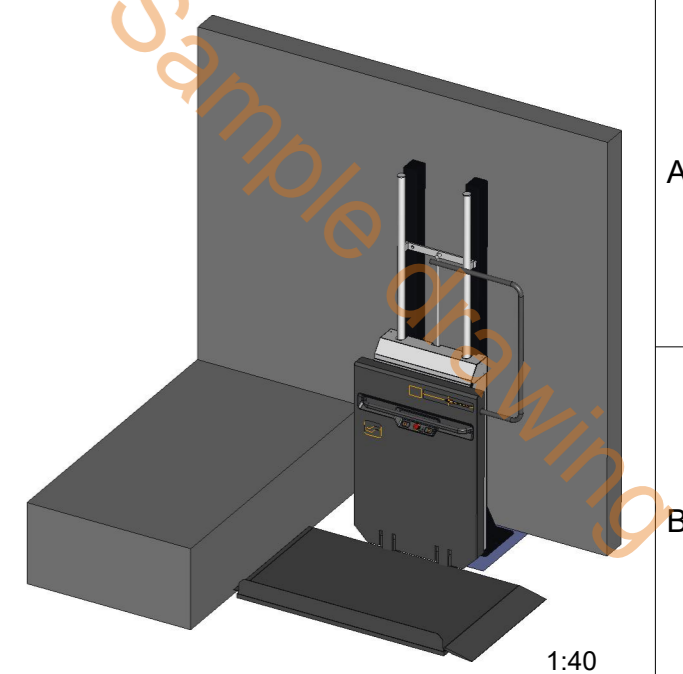
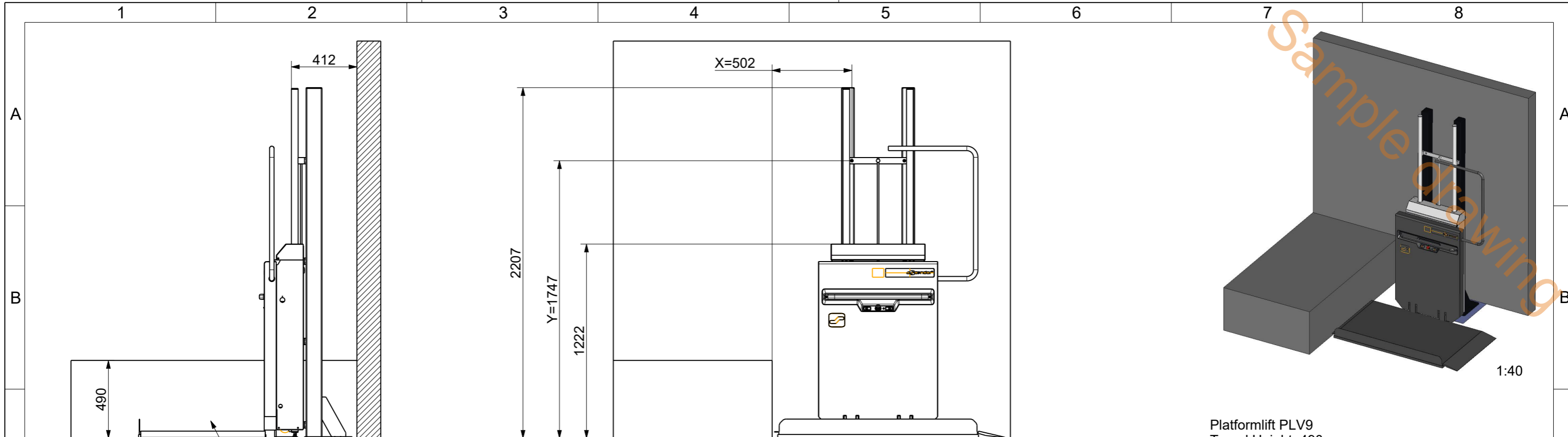
<a> ... Platzbedarf Plattform geschlossen
 ... Platzbedarf Plattform offen

Datum, Unterschrift

230V Stromzuleitung (Kabel 3x1,5mm²) zum gewünschten Montagepunkt des Ladegeräts bauseits. Weiters ist die Absicherung mit höchstens 13A und einem FI-Schutzschalter mit einem Auslösefehlerstrom von 0,03A herzustellen. Zusätzlicher Erdungsanschluss an der Fahrbahn/den Stützen (min. 6mm²) erforderlich.
 Für eine ausreichende Treppenbeleuchtung, welche unabhängige von einer Zeitschaltung ist, muss bauseits gesorgt werden. Eine minimale Lichtstärke von 50 lux muss vorhanden sein.
 Der Betreiber gewährleistet, dass im Bereich der Stützen- oder Wandbefestigungen keine Versorgungsleitungen (Fußbodenheizung, Strom-, Gas-, Wasserleitungen, etc.) liegen.
 Scher- und Quetschstellen, welche sich näher als 100mm an nicht kontaktgesicherten beweglichen Teilen der Anlage befinden, müssen bauseits vollflächig verkleidet werden.
 Für eine vollflächige Fahrbahnverkleidung entsprechend der geltenden Bauordnung ist bauseits zu sorgen.
 Bei jeder Fahrt sollte vom Benutzer ein funktionstüchtiges Mobiltelefon mitgeführt werden.

Dateiname des Zeichnungsobjektes: PLV9-SCHUSTER		Dateityp: ASSEM	Dateiname der Zeichnung: PLV9-SCHUSTER	
Allgemeintol. DIN ISO 2768-m-H		Kanten DIN ISO 13715	Maßstab 1:25	
			Werkstoff: Halbzeug: PLV9-	
		Datum	Name	
		Bear.	29.03.2023 Mayrhofer	
		Gepr.		
		Norm		
		Benennung:		
		Zeichnungsnummer: ANG-035331		Blatt1 1 Bl.
Zust.	Änderung	Datum	Nam. (Urspr.)	(Ers.f.): (Ers.d.):





Platformlift PLV9
 Travel Height: 490 mm
 Right hand (as viewed from lower level)
 Platform Size: 1250 x 800 mm
 Loading Capacity: 225kg
 Powder coated in standard RAL 9006
 Mounting: stanchions
 2x wall mounted remote control incl. keyswitch
 Inside installation

LIBÉRATION DE LA PRODUCTION :
 Par la présente, j'autorise Ascendor GmbH à fabriquer ce système de levage et je certifie que le placement du rail est correct et que toutes les spécifications sont exactes. Ascendor n'est pas responsable des erreurs basées sur des mesures incorrectes et ne sera pas responsable des coûts encourus en conséquence. En confirmant le plan d'installation, j'accepte également les CGV et l'offre finale associée.

Date, Signature

concrete foundation:
 - quality: C20/25
 - size: 70x470mm
 - depth: frost-proofed
 - flat surface

Stanchions 100x80mm
 galvanized and powder coated RAL 9006
 Length = 2200mm (2 pcs.)

<a> ... required space platform closed
 ... required space platform open

Ligne d'alimentation 230V (câble 3x1,5mm²) jusqu'au point d'installation souhaité du chargeur sur le site. En outre, la protection par fusible doit être assurée avec un maximum de 13A et un disjoncteur différentiel avec un courant de défaut de déclenchement de 0,03A. Une connexion supplémentaire à la terre sur le rail de guidage/les supports (min. 6mm²) est nécessaire.

Un éclairage suffisant des escaliers, indépendant d'un interrupteur horaire, doit être prévu sur place. Une intensité lumineuse minimale de 50 lux doit être fournie.

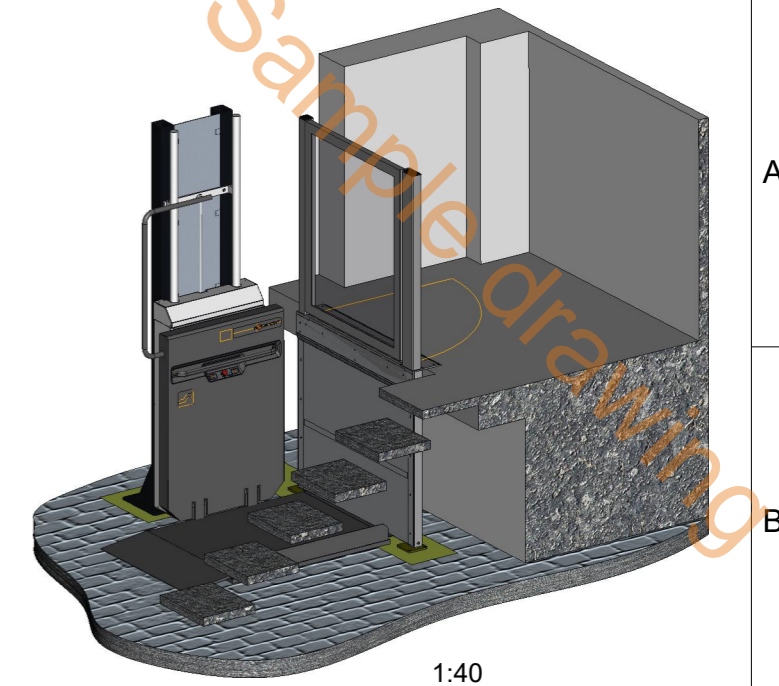
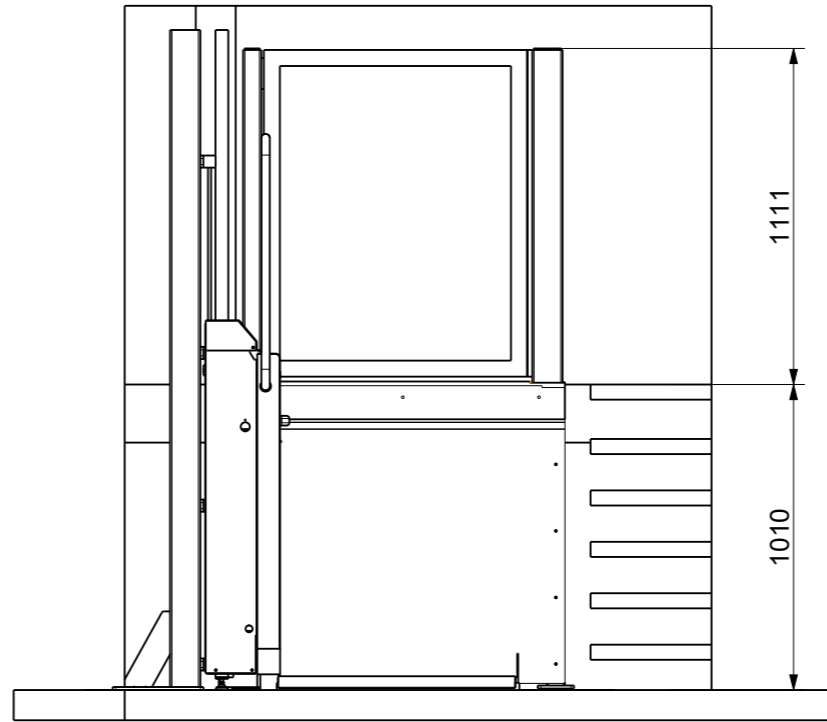
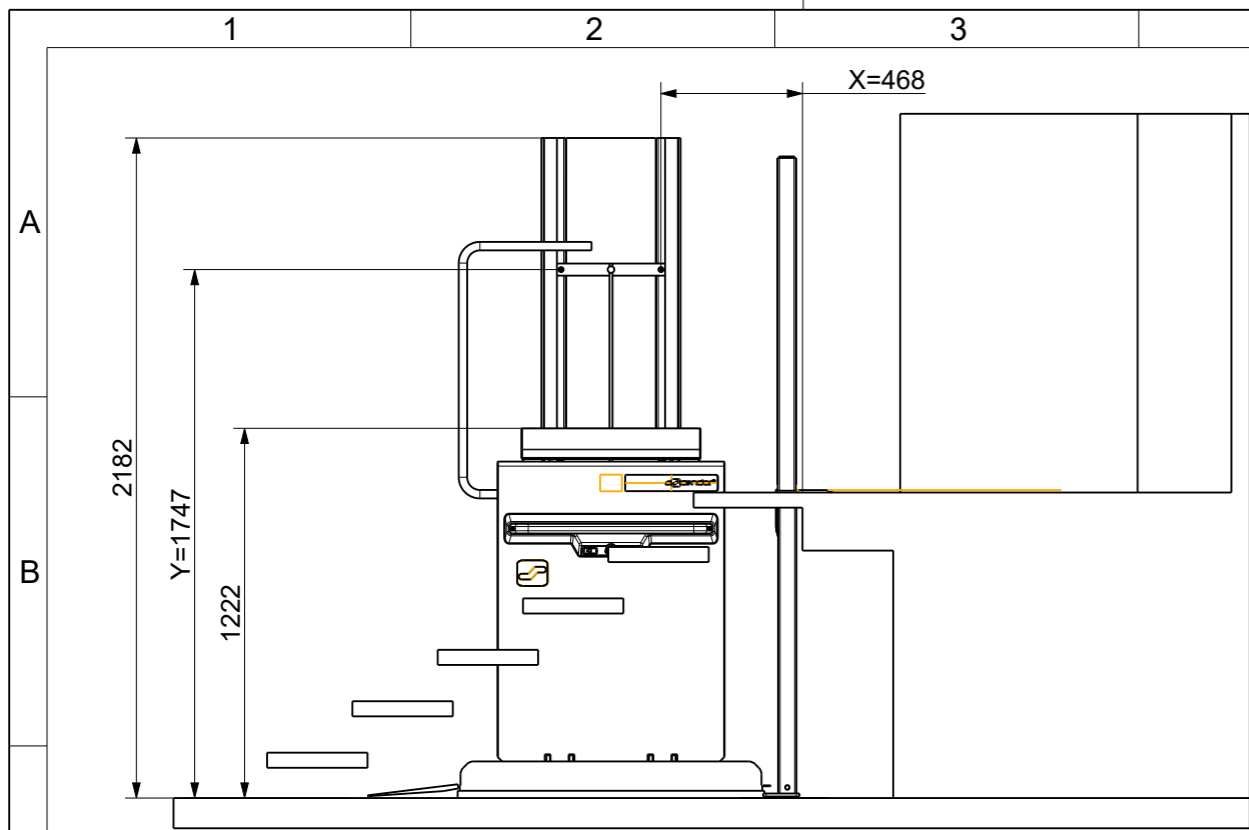
L'exploitant garantit qu'il n'y a pas de conduites d'alimentation (chauffage par le sol, électricité, gaz, conduites d'eau, etc.) dans la zone du support ou des fixations murales.

Les points de cisaillement et de pincement qui se trouvent à moins de 100 mm des parties mobiles sans contact du système doivent être entièrement couverts sur place.

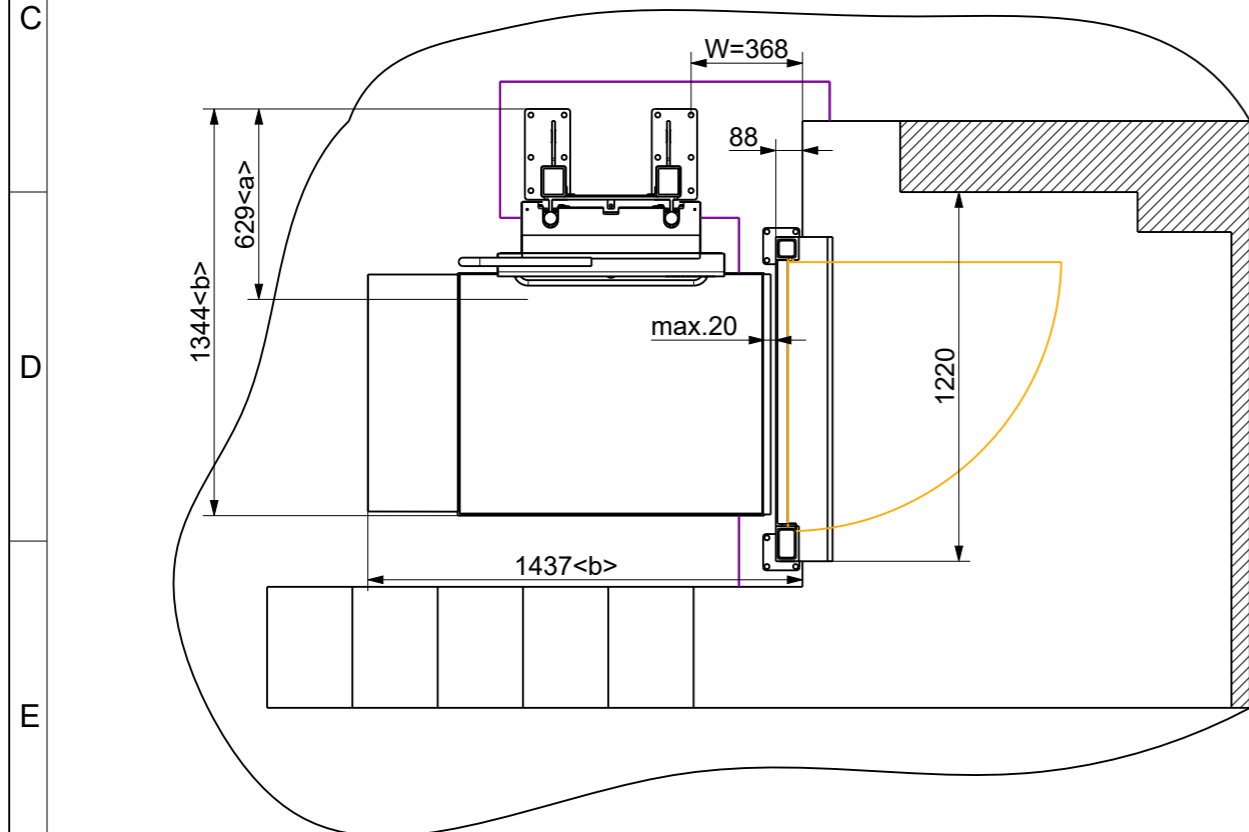
Le client doit prévoir un revêtement complet de la voie, conformément aux règles de construction applicables.

Un téléphone portable en état de marche doit être porté par l'utilisateur lors de chaque voyage.

Dateiname des Zeichnungsobjektes: PLV9-TENNIS-CLUB				Dateityp: ASSEM	Dateiname der Zeichnung: PLV9-TENNIS-CLUB		
Allgemeintol. DIN ISO 2768-m-H				Kanten DIN ISO 13715	Maßstab 1:25		
					Werkstoff: Halbzeug: PLV9-11-00297		
				Datum	Name	Benennung:	
				Bear.	28.04.2023		Mayrhofer
				Gepr.			
				Norm			
						Zeichnungsnummer: ASC-027285	
Zust.	Änderung	Datum	Nam. (Urspr.)				(Ers.f.):
					Blatt1 1 Bl.		



1:40



Lift will be replaced

- Existing parts reused:
- Rail
 - Stanchions 100x80mm
 - Cover panels between stanchions in RAL 9006
 - Door DIN right
 - Sliding wall for door

Platformlift PLV9
 Travel Height: 1010 mm
 Left hand (as viewed from lower level)
 Platform Size: 1000 x 800 mm
 Loading Capacity: 225kg
 Powder coated in standard RAL 9006
 Mounting: stanchions
 2x handheld remote control
 Outside installation

300mm ramp downstairs side
 Door for upper landing DIN right -> reused
 Sliding wall for door -> reused

Production approval:
 I hereby order the lift system as shown on the drawing and confirm that the layout of the railway is correct. All natural measurements are based on facts given from you. Ascendor is not responsible for charges which are a result from wrong stated measurements. By confirming the installation drawing, I also accept the GTCs and the final associated offer.

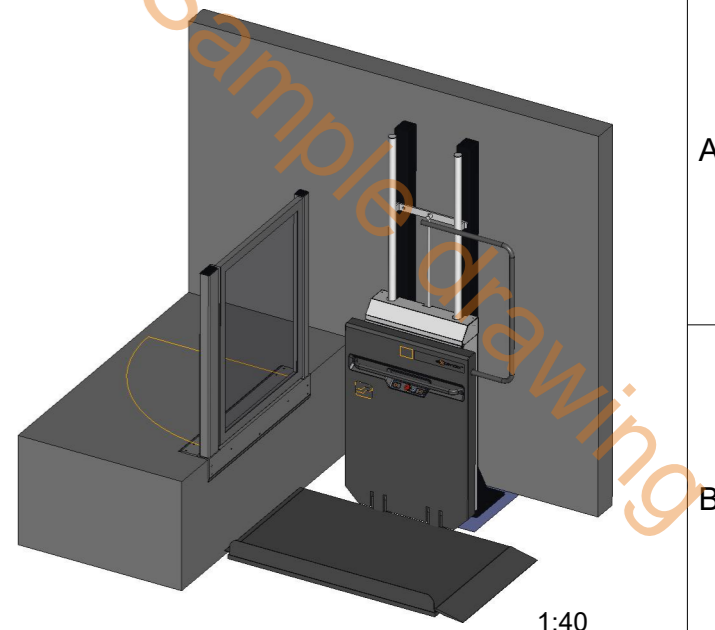
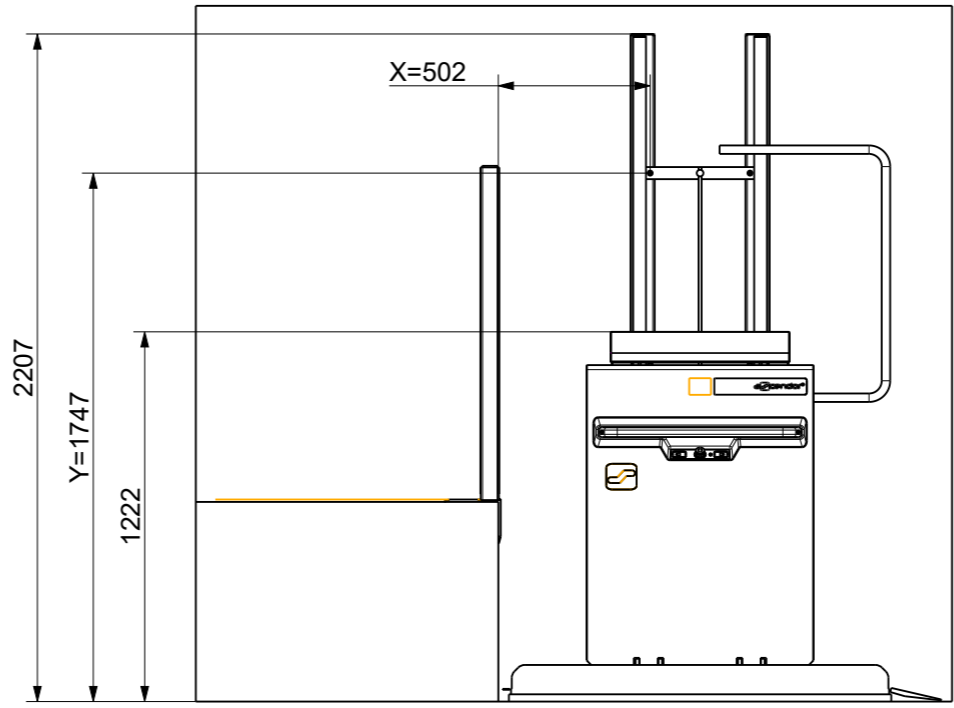
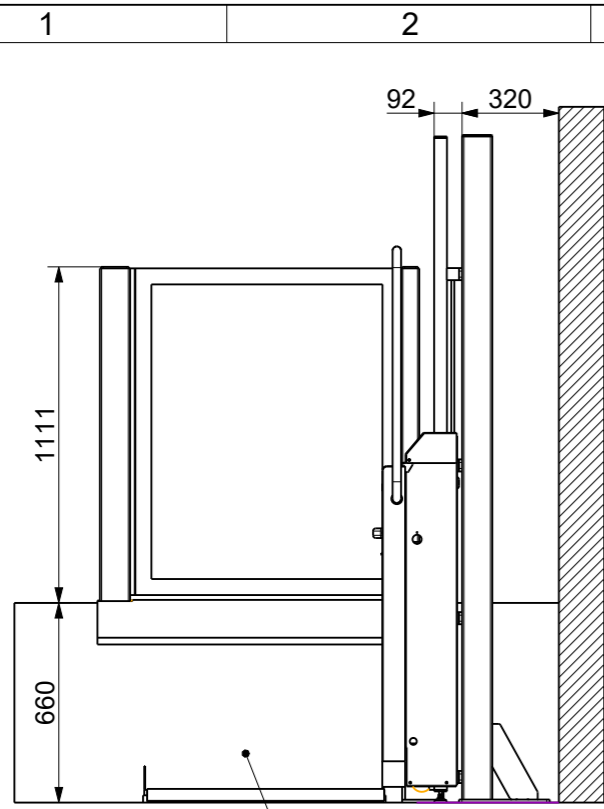
<a> ... required space platform closed
 ... required space platform open

date, sign

230V power supply line (cable 3x1.5mm²) to the desired mounting point of the battery charger must be supplied on site. Additional earth connection on the rail/stanchions (min. 6mm²) required. Furthermore, fuse protection with a maximum of 13A and an earth-leakage circuit breaker with a tripping fault current of 0.03A must be provided. Adequate staircase lighting which is independent of a timer must be provided by the customer. A minimum light intensity of 50 lux must be available.

The operator guarantees that there are no supply lines (underfloor heating, electricity, gas, water pipes, etc.) in the area of the stanchions or wall fixings. Shearing and crushing points that are closer than 100mm to non-contact protected moving parts of the system must be fully covered on site. A full-surface rail covering in accordance with the applicable building regulations must be provided by the customer. The user should carry a fully functional mobile phone with him/her on each journey.

Dateiname des Zeichnungsobjektes: PLV9-VOLEJNIKOVA-2		Dateityp: ASSEM	Dateiname der Zeichnung: PLV9-VOLEJNIKOVA-2	
Allgemeintol. DIN ISO 2768-m-H		Kanten DIN ISO 13715	Maßstab 1:25	
			Werkstoff: Halbzeug: PLV9-	
		Datum	Benennung:	
		Bear. 02.05.2023	Name	
		Gepr.	Mayrhofer	
		Norm		
				Zeichnungsnummer: ANG-035709
				Blatt1 1 Bl.
Zust.	Änderung	Datum	Nam. (Urspr.)	(Ers.f.) (Ers.d.)

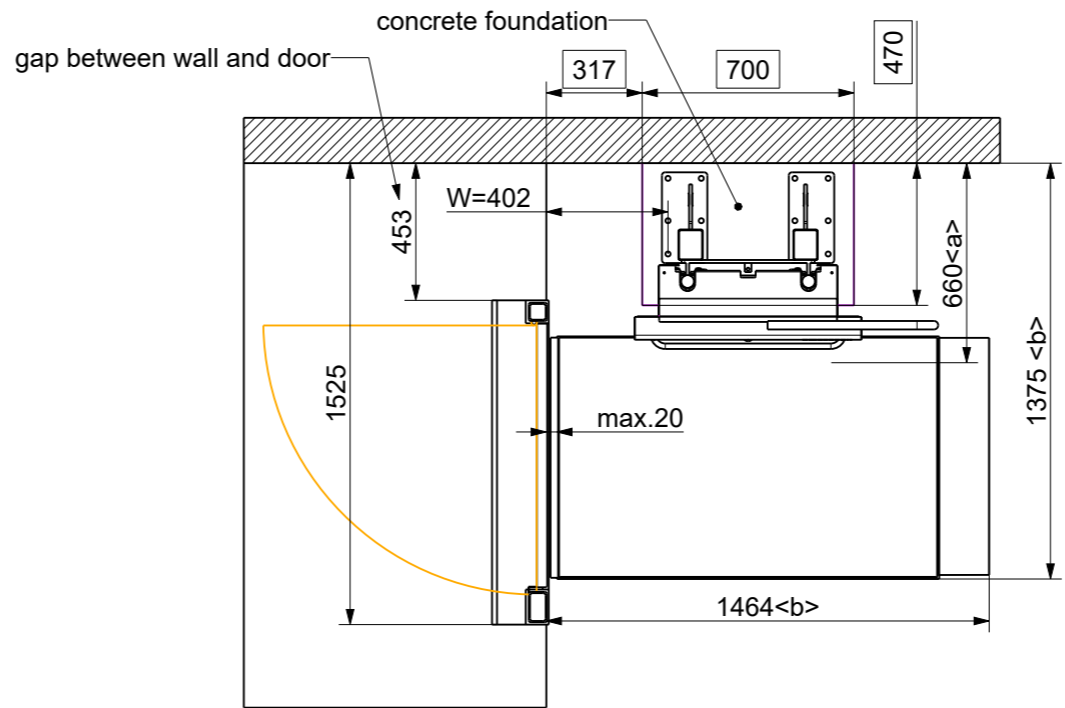


Plattformlift PLV9
 Travel Height: 660 mm
 Right hand (as viewed from lower level)
 Platform Size: 1250 x 800 mm
 Loading Capacity: 225kg
 Powder coated in standard RAL 9006
 Mounting: stanchions
 2x handheld remote control
 Outdoors installation

Platform folding support
 Door for upper landing DIN left

Production approval:
 I hereby order the lift system as shown on the drawing and confirm that the layout of the railway is correct. All natural measurements are based on facts given from you. Ascendor is not responsible for charges which are a result from wrong stated measurements. By confirming the installation drawing, I also accept the GTCs and the final associated offer.

date, sign



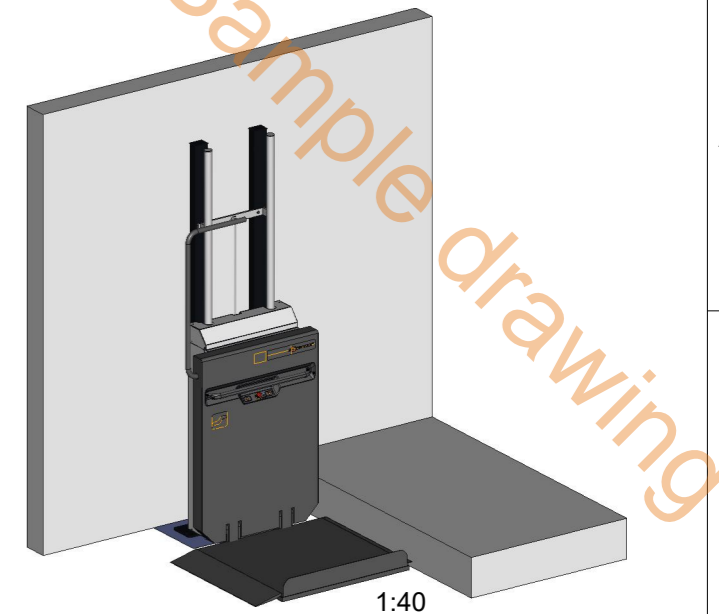
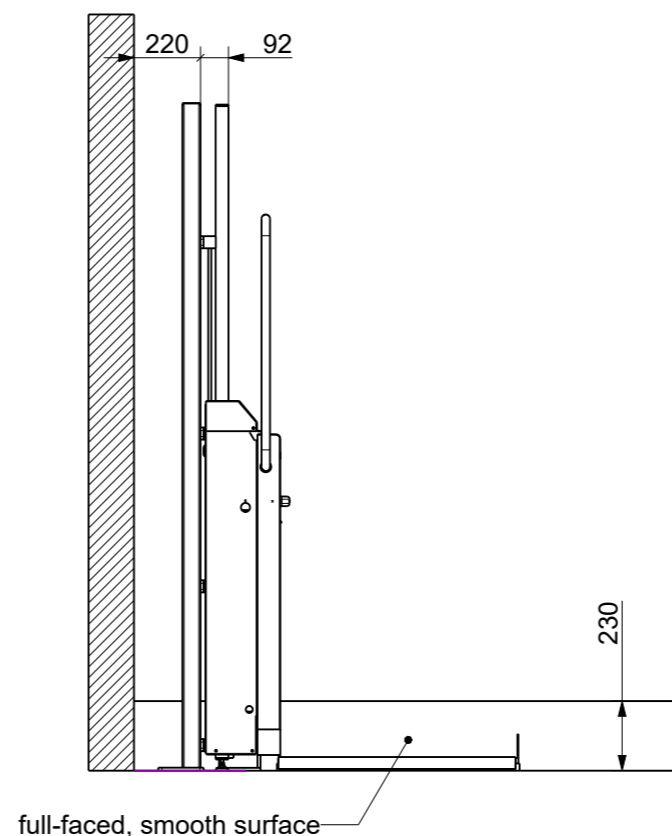
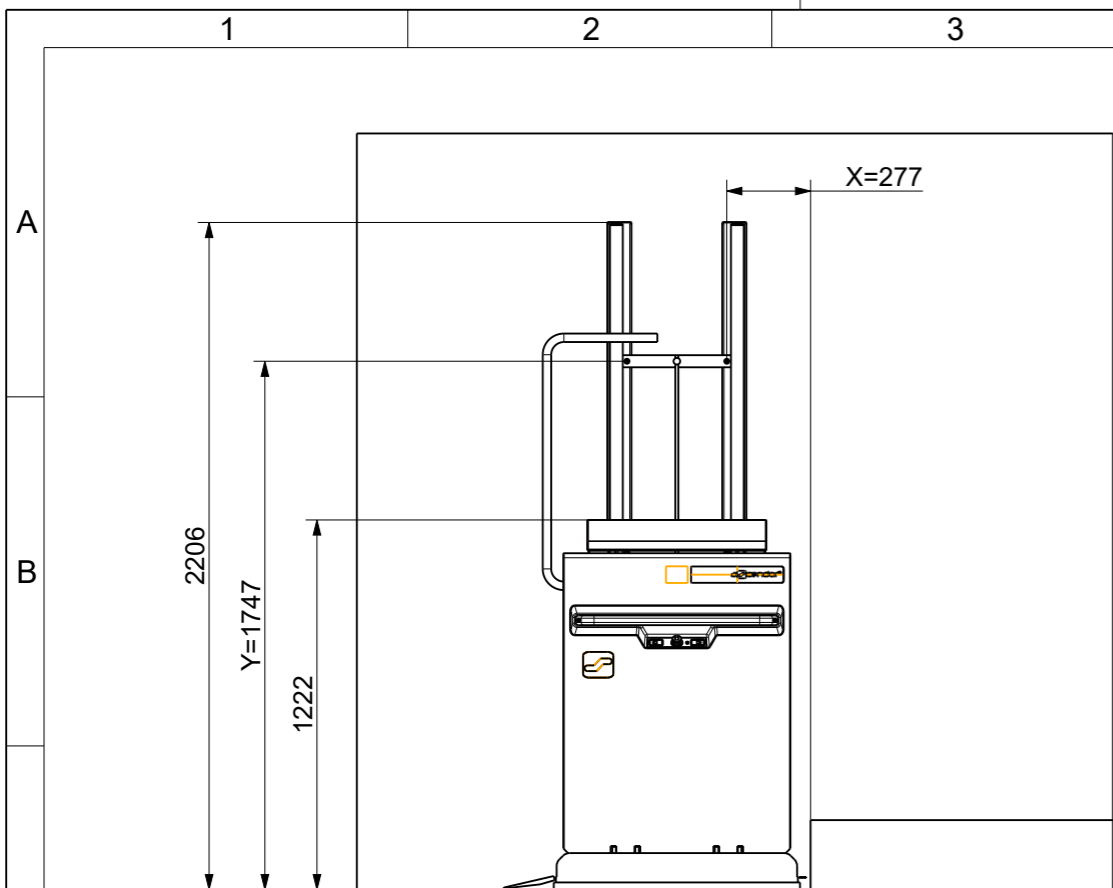
concrete foundation:
 - quality: C20/25
 - size: 700x470mm
 - depth: frost-proofed
 - flat surface

Stanchions 100x80mm
 powder coated RAL 9006
 Length = 2200mm (2 pcs.)

<a> ... required space platform closed
 ... required space platform open

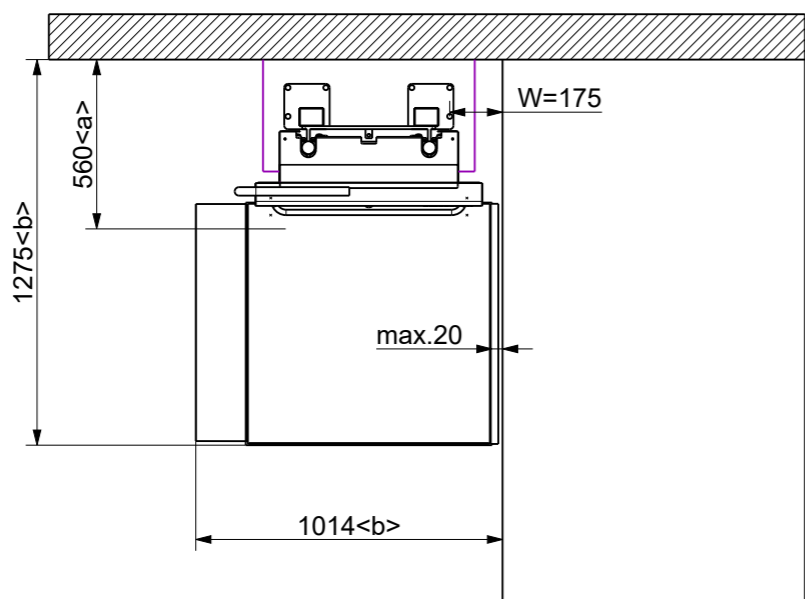
230V power supply line (cable 3x1.5mm²) to the desired mounting point of the battery charger must be supplied on site. Additional earth connection on the rail/stanchions (min. 6mm²) required. Furthermore, fuse protection with a maximum of 13A and an earth-leakage circuit breaker with a tripping fault current of 0.03A must be provided. Adequate staircase lighting which is independent of a timer must be provided by the customer. A minimum light intensity of 50 lux must be available. The operator guarantees that there are no supply lines (underfloor heating, electricity, gas, water pipes, etc.) in the area of the stanchions or wall fixings. Shearing and crushing points that are closer than 100mm to non-contact protected moving parts of the system must be fully covered on site. A full-surface rail covering in accordance with the applicable building regulations must be provided by the customer. The user should carry a fully functional mobile phone with him/her on each journey.

Dateiname des Zeichnungsobjektes: PLV9-CLONDALKIN				Dateityp: ASSEM	Dateiname der Zeichnung: PLV9-CLONDALKIN	
Allgemeintol. DIN ISO 2768-m-H				Kanten DIN ISO 13715	Maßstab 1:25	
					Werkstoff: Halbzeug: PLV9-11-00302	
				Datum	Name	Benennung:
				Bear. 28.06.2023	Mayrhofer	
				Gepr.		
				Norm		
						Zeichnungsnummer: ASC-027768
Zust.	Änderung	Datum	Nam. (Urspr.)			
					Blatt1 1 Bl.	



Plattformlift PLV9
 Travel Height: 230 mm
 Left hand (as viewed from lower level)
 Platform Size: 800 x 800 mm
 Loading Capacity: 225kg
 Powder coated in standard RAL 9006
 Mounting: stanchions
 2x wall mounted remote control incl. keyswitch
 1x handheld remote control
 Inside installation

LIBÉRATION DE LA PRODUCTION :
 Par la présente, j'autorise Ascendor GmbH à fabriquer ce système de levage et je certifie que le placement du rail est correct et que toutes les spécifications sont exactes.
 Ascendor n'est pas responsable des erreurs basées sur des mesures incorrectes et ne sera pas responsable des coûts encourus en conséquence.
 En confirmant le plan d'installation, j'accepte également les CGV et l'offre finale associée.



<a> ... required space platform closed
 ... required space platform open

Date, Signature

Ligne d'alimentation 230V (câble 3x1,5mm²) jusqu'au point d'installation souhaité du chargeur sur le site. En outre, la protection par fusible doit être assurée avec un maximum de 13A et un disjoncteur différentiel avec un courant de défaut de déclenchement de 0,03A. Une connexion supplémentaire à la terre sur le rail de guidage/les supports (min. 6mm²) est nécessaire.

Un éclairage suffisant des escaliers, indépendant d'un interrupteur horaire, doit être prévu sur place. Une intensité lumineuse minimale de 50 lux doit être fournie.

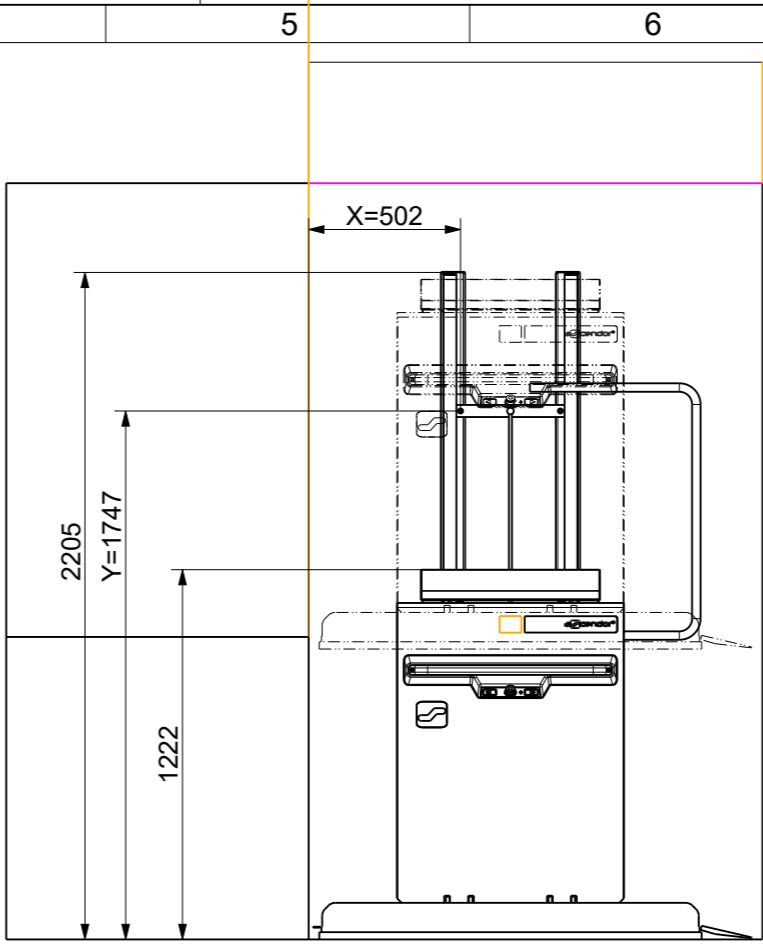
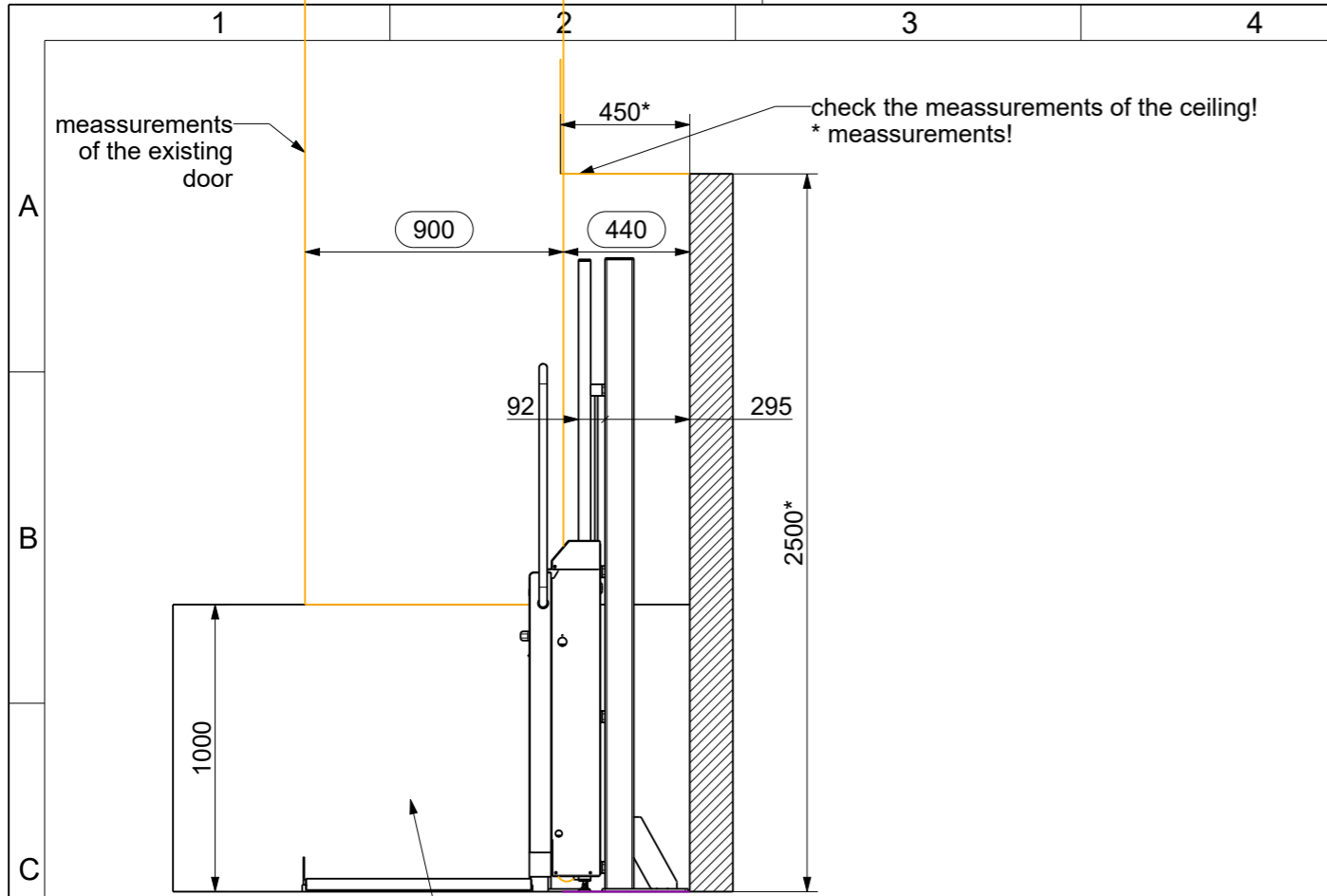
L'exploitant garantit qu'il n'y a pas de conduites d'alimentation (chauffage par le sol, électricité, gaz, conduites d'eau, etc.) dans la zone du support ou des fixations murales.

Les points de cisaillement et de pincement qui se trouvent à moins de 100 mm des parties mobiles sans contact du système doivent être entièrement couverts sur place.

Le client doit prévoir un revêtement complet de la voie, conformément aux règles de construction applicables.

Un téléphone portable en état de marche doit être porté par l'utilisateur lors de chaque voyage.

Dateiname des Zeichnungsobjektes: PLV9-DEPRIS		Dateityp: ASSEM	Dateiname der Zeichnung: PLV9-DEPRIS	
		Allgemeintol. DIN ISO 2768-m-H	Kanten DIN ISO 13715	Maßstab 1:25
		Werkstoff: Halbzeug: PLV9-11-00287		
		Benennung:		
		Datum	Name	
		Bear.	18.01.2023 Mayrhofer	
		Gepr.		
		Norm		
				Blatt1 1 Bl.
Zust.	Änderung	Datum	Nam. (Urspr.)	(Ers.f.) (Ers.d.)



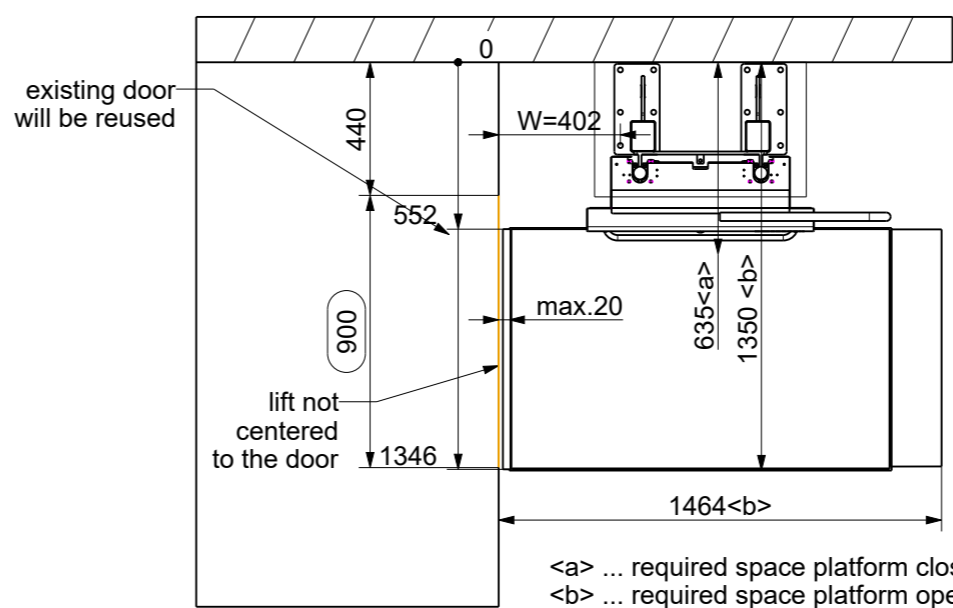
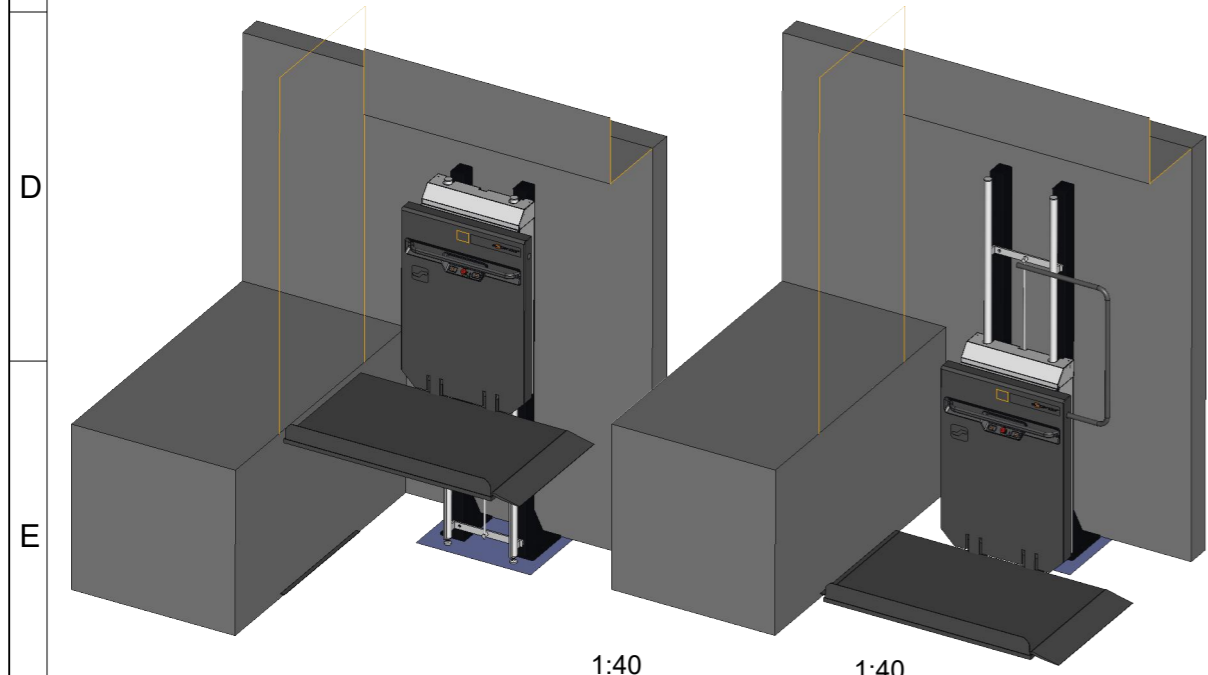
Platformlift PLV9
 Travel Height: 1000 mm
 Right hand (as viewed from lower level)
 Platform Size: 1250 x 800 mm
 Loading Capacity: 225kg
 Powder coated in standard RAL 9006
 Mounting: stanchions
 2x wall mounted remote control incl. keyswitch
 Inside installation

Stanchions 100x80mm
 galvanized and powder coated RAL 9006
 Length = 2200mm (2 pcs.)

Door provided on site

LIBÉRATION DE LA PRODUCTION :
 Par la présente, j'autorise Ascendor GmbH à fabriquer ce système de levage et je certifie que le placement du rail est correct et que toutes les spécifications sont exactes. Ascendor n'est pas responsable des erreurs basées sur des mesures incorrectes et ne sera pas responsable des coûts encourus en conséquence. En confirmant le plan d'installation, j'accepte également les CGV et l'offre finale associée.

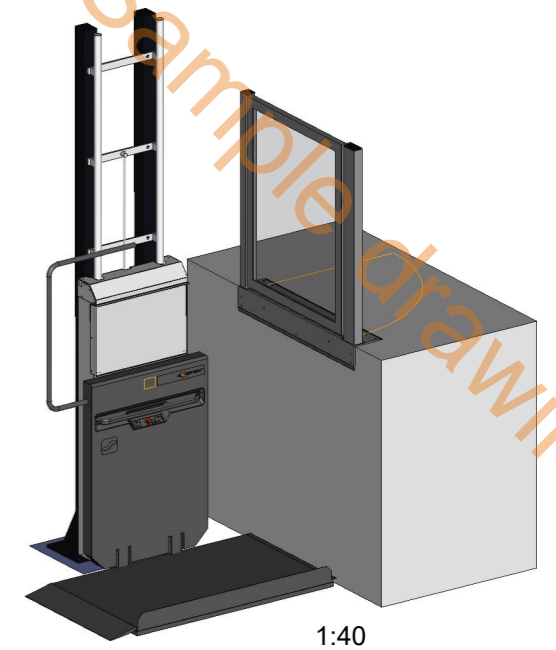
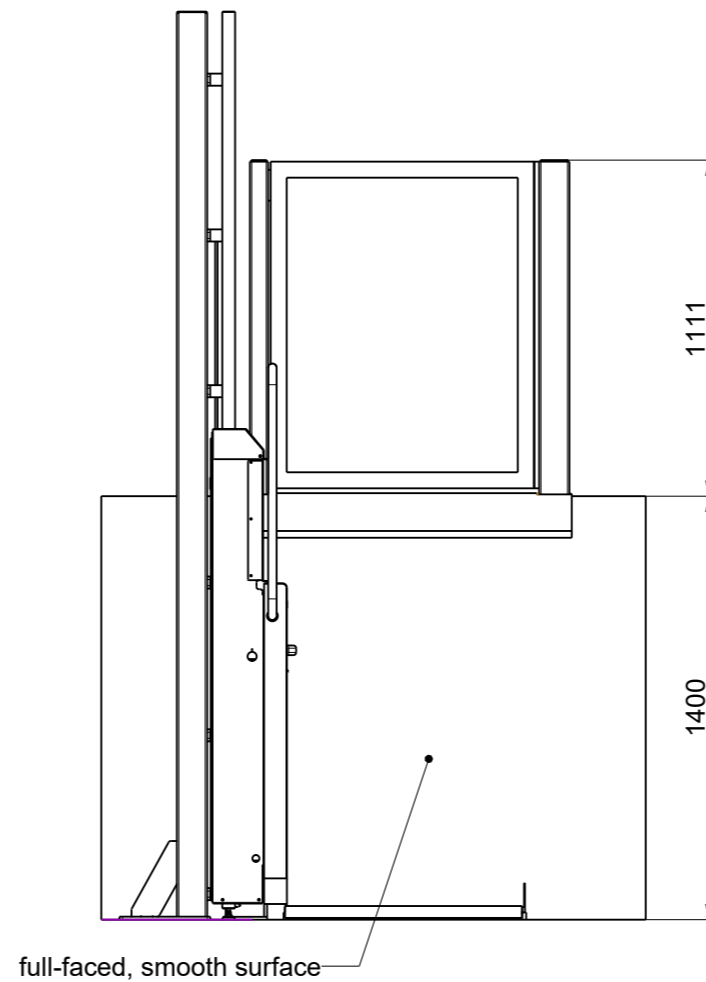
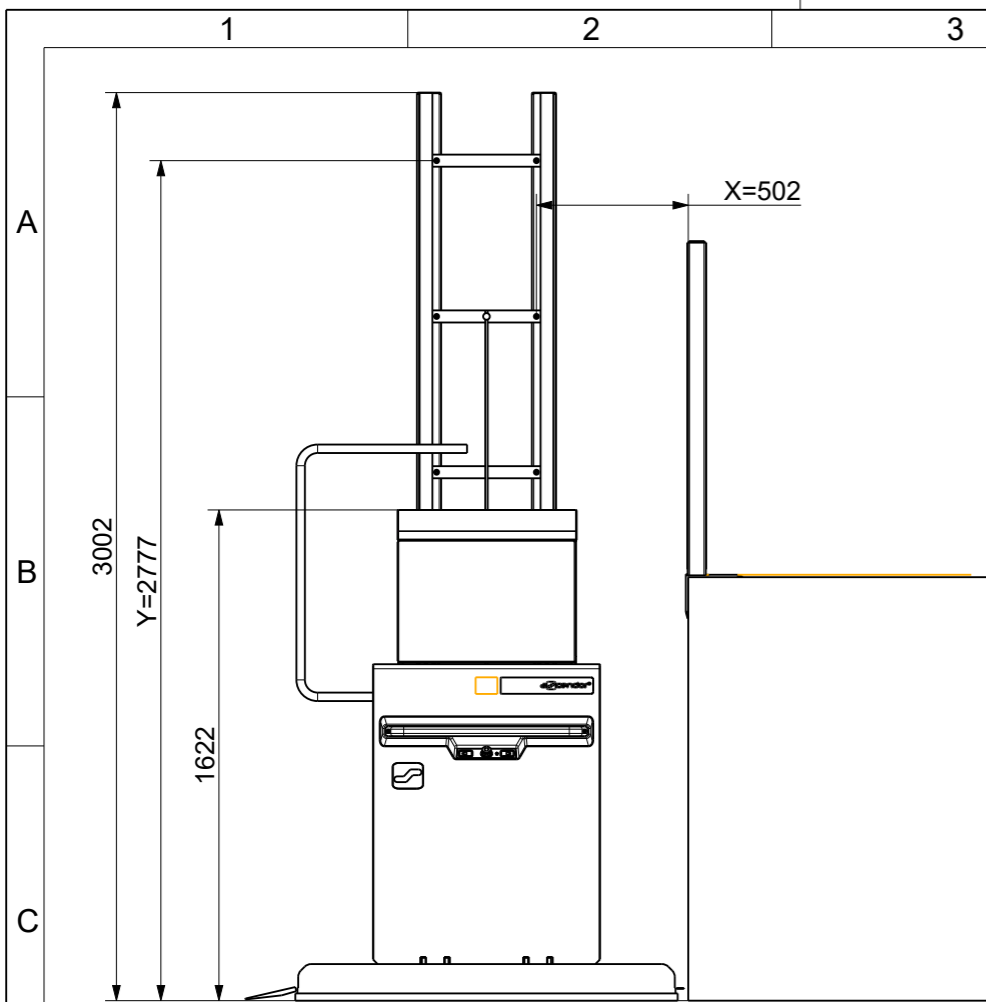
Date, Signature



<a> ... required space platform closed
 ... required space platform open

Ligne d'alimentation 230V (câble 3x1,5mm²) jusqu'au point d'installation souhaité du chargeur sur le site. En outre, la protection par fusible doit être assurée avec un maximum de 13A et un disjoncteur différentiel avec un courant de défaut de déclenchement de 0,03A. Une connexion supplémentaire à la terre sur le rail de guidage/les supports (min. 6mm²) est nécessaire.
 Un éclairage suffisant des escaliers, indépendant d'un interrupteur horaire, doit être prévu sur place. Une intensité lumineuse minimale de 50 lux doit être fournie.
 L'exploitant garantit qu'il n'y a pas de conduites d'alimentation (chauffage par le sol, électricité, gaz, conduites d'eau, etc.) dans la zone du support ou des fixations murales.
 Les points de cisaillement et de pincement qui se trouvent à moins de 100 mm des parties mobiles sans contact du système doivent être entièrement couverts sur place.
 Le client doit prévoir un revêtement complet de la voie, conformément aux règles de construction applicables.
 Un téléphone portable en état de marche doit être porté par l'utilisateur lors de chaque voyage.

Dateiname des Zeichnungsobjektes: PLV9-DESMAREST		Dateityp: ASSEM	Dateiname der Zeichnung: PLV9-DESMAREST	
Allgemeintol. DIN ISO 2768-m-H		Kanten DIN ISO 13715	Maßstab 1:25	
			Werkstoff: Halbzeug: PLV9-11-00288	
		Datum	Name	
		Bear.	16.02.2023 Wolfmayr	
		Gepr.		
		Norm		
		Benennung:		
		Zeichnungsnummer: ASC-026551		Blatt1
				1 Bl.
Zust.	Änderung	Datum	Nam. (Urspr.)	(Ers.f.:) (Ers.d.):

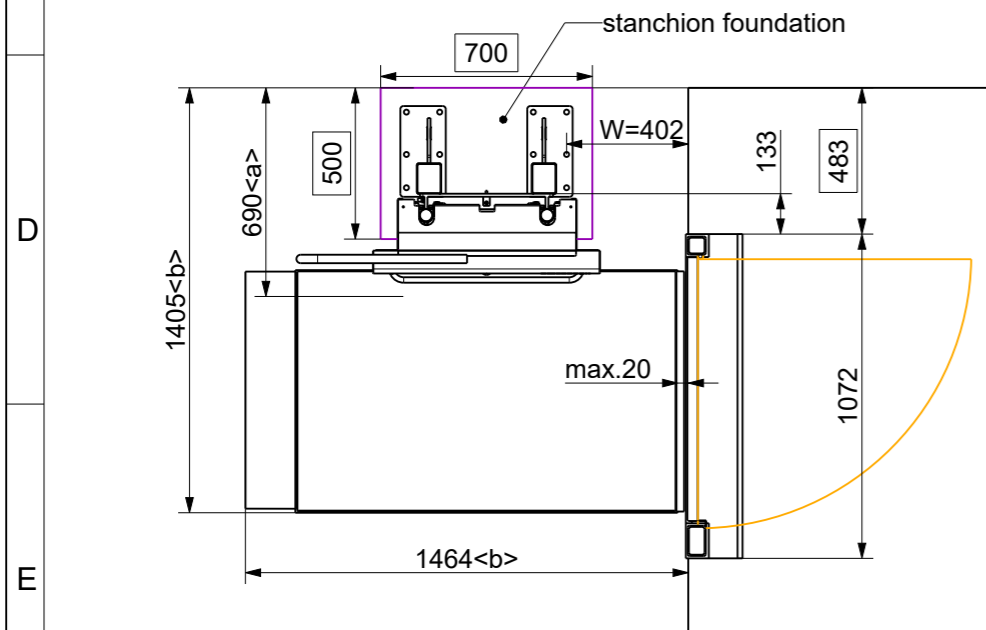


Platformlift PLV9
 Travel Height: 1400 mm
 Left hand (as viewed from lower level)
 Platform Size: 1250 x 800 mm
 Loading Capacity: 225kg
 Powder coated in standard RAL 9006
 Mounting: stanchions
 2x wall mounted remote control incl. keyswitch
 Outdoors installation

Platform folding support
 Folding seat made of stainless steel
 Door for upper landing DIN right

Production approval:
 I hereby order the lift system as shown on the drawing and confirm that the layout of the railway is correct. All natural measurements are based on facts given from you.
 Ascendor is not responsible for charges which are a result from wrong stated measurements.
 By confirming the installation drawing, I also accept the GTCs and the final associated offer.

date,sign



concrete foundation:
 - quality: C20/25
 - size: 700x500mm
 - depth: frost-proofed
 - flat surface

Stanchions 100x80mm
 powder coated RAL 9006
 Length = 3000mm (2 pcs.)

<a> ... required space platform closed
 ... required space platform open

230V power supply line (cable 3x1.5mm²) to the desired mounting point of the battery charger must be supplied on site. Additional earth connection on the rail/stanchions (min. 6mm²) required. Furthermore, fuse protection with a maximum of 13A and an earth-leakage circuit breaker with a tripping fault current of 0.03A must be provided. Adequate staircase lighting which is independent of a timer must be provided by the customer. A minimum light intensity of 50 lux must be available.

The operator guarantees that there are no supply lines (underfloor heating, electricity, gas, water pipes, etc.) in the area of the stanchions or wall fixings.

Shearing and crushing points that are closer than 100mm to non-contact protected moving parts of the system must be fully covered on site.

A full-surface rail covering in accordance with the applicable building regulations must be provided by the customer. The user should carry a fully functional mobile phone with him/her on each journey.

Dateiname des Zeichnungsobjektes: PLV9-DUNDAS-VALLEY				Dateityp: ASSEM	Dateiname der Zeichnung: PLV9-DUNDAS-VALLEY			
Allgemeintol. DIN ISO 2768-m-H				Kanten DIN ISO 13715	Maßstab 1:25			
					Werkstoff: Halbzeug: PLV9-12-00313			
				Datum	Name	Benennung:		
				Bear.	21.08.2023	Mayrhofer		
				Gepr.				
				Norm				
						Zeichnungsnummer:		Blatt1
						ASC-028288		
Zust.	Änderung	Datum	Nam. (Urspr.)	(Ers.f.):		(Ers.d.):		